

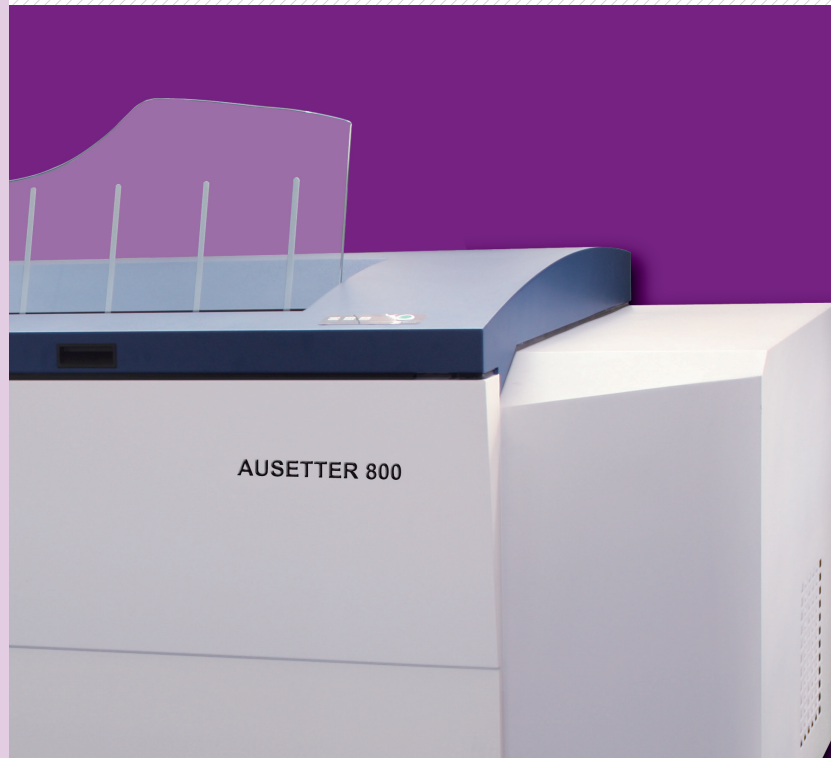
# CtPS

## Ausetter 800 conventional platesetter

◆ **Conventional plate**

◆ **Autofocus**

◆ **High output Speed**



## Technical Features of Ausetter 800

### **Use conventional plate**

Use conventional plate is the lowest consumable cost at present moment.

### **Mature and reliable technology of 32-64channel discrete 405nm laser diode**

The Ausetter 800 can produce extremely sharp and clear screen dots with the conventional plate ( long running life ).It is completely daylight operation and with a stable working life over several ten thousands hours.So it comes out more cost effective.

### **External drum design**

Using the bend and clamp technology from the printing machines.It turns out good registration and quality dots with an incredible speed up to 29 (1030X800) plate per hour.

### **Autofocus**

Our autofocus feature can keep constant distance between the laser and plate in real time mode. That is can eliminate error arise from any irregular surface of the plate during the plate production in turns can save a lots of material and time.

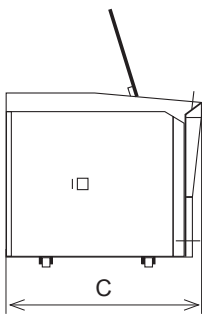
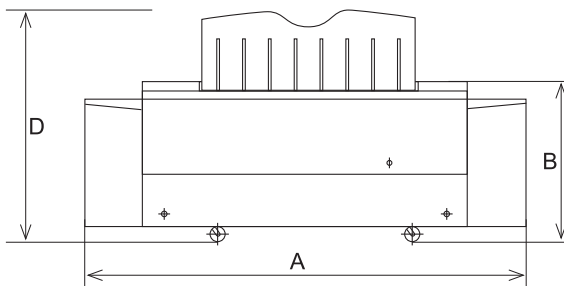
### **Unique screen control technology**

With our precise dot compensation technology we can generate distinguishable gray scale between 1 to 99 %.

### **Easy operation**

With highspeed USB2.0 interface. Ausetter 800 can easily install and operate like a printer with the plug and play technology.

Ausetter 800 Computer To Plate, developed and manufactured by Amsky Machine Equipment Ltd.(Foreign capital), is a UV-CTP with stable performance and reliable quality.



Size

	mm
A	2,530
B	950
C	1,050
D	1,380

## Ausetter 800 Specifications

Exposing Method	External Drum		
Imaging System	32-channel	48-channel	64-channel
	Discrete 405nm laser diode		
Throughput	16 plates per hour	22 plates per hour	29 plates per hour
	1,030x800mm 2400dpi		
Plate Size	Max. 1,130X900mm, min.400X300mm		
Exposing Size	Max.1,130X884mm, min. 400X284mm		
Media Type	Conventional plate		
Plate Thickness	0.15mm to 0.3mm		
Resolutions	2,400dpi		
Repeatability	$\pm 5 \mu\text{m}$ (continuous exposing for four times or above on the same plate with a temperature of 23 °C and humidity of 60%)		
Interface	USB2.0		
Plate Loading	semi automatic		
Weight	900KG		
Size (W xDx H)	2,530mmx1,050mmx950mm ( WxDxH )		
Power Supply	single-phase: 220AC, +6%, -10%, Power Consumption: 4KW		
Environment	recommended: 21-25 °C, Max. 18-26 °C, humidity: 40-70%		

[www.polyte.com](http://www.polyte.com)

Specifications are subject to change without notice.

Guangzhou Polytech Enterprise Development Co., Ltd.

Add : Room 1402, Ziyuan Business Building, No. 745 East Dongfeng Road, Guangzhou

Tel : 86-20 2202 5090 2202 5091

Fax : 86-20 2202 5050

Pc : 510080

