



When printing colour proofs, large format posters or composites that demand top quality colour reproduction, choosing a PostScript RIP is as important as choosing the colour printer itself. ColorExpress from Compose is the ideal RIP for digital colour printing. Based around the high performance Express RIP, ColorExpress offers interfaces for all popular large format inkjet printers and A3+ laser printers. However, ColorExpress is not just a RIP. With innovative productivity features bundled as standard, an easy-to-use console and powerful colour management and screening capabilities, ColorExpress is a comprehensive solution for graphic arts professionals.

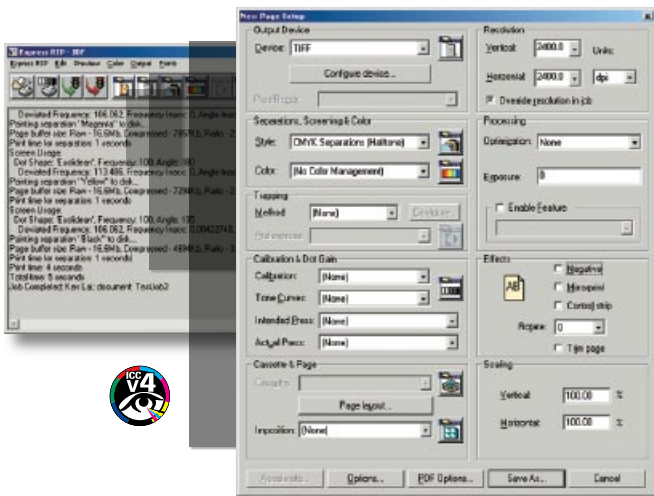
Proofing Family

Accurate & consistent colour for professional proofing

ColorExpress

Highlights

- Enhanced job management for better handling on laser printer
- Advanced job handling: Step-and-Repeat, Tiling & Cropping
- Supports all popular printers
- Accepts a large number of file formats
- Advanced ICC colour management
- Support media savings option
- Support Multi-threaded Processor



Features and Benefits

Simplified RIP console for ColorExpress interface

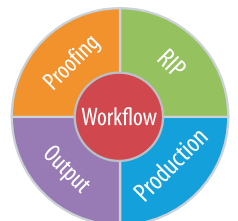
To increase productivity Compose has re-engineered the user interface of the Harlequin RIP to give a clear, intuitive console that simplifies routine RIP operations. The ColorExpress console allows the user to manage and control complex jobs with ease providing advanced job queue management and direct access to the full range of RIP controls and settings.

Unique 2-bit screening technology

In addition to Harlequin Dispersed Screening, which is available for use with any colour printer, ColorExpress provides 2-bit Screening for even higher quality colour reproduction on Epson inkjet printers such as the Stylus Pro 4400, 4800, 4880, 7400, 7600, 7800, 7880, 9400, 9600, 9800, 9880, 10000, 10600 and 11880. These printers are equipped with Epson's Variable Sized Droplet Technology, which is used by Compose 2-bit Screening to select optimal dot sizes during image processing and improve reproduction of subtle tonal variations.

An Open Future

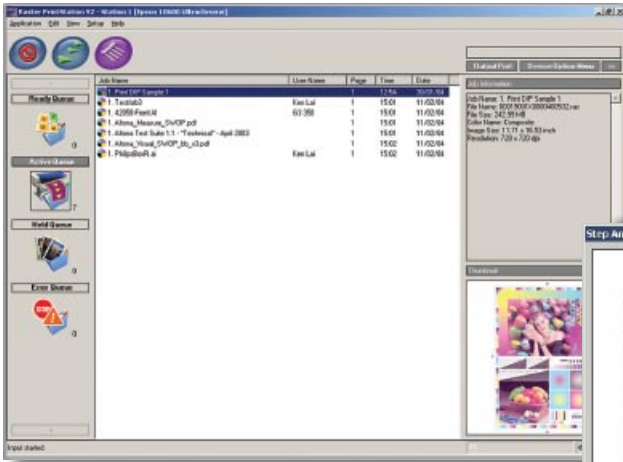
www.compose.com.hk www.compose.co.uk www.composeusa.com



Colour management

ColorExpress supports the full implementation of PostScript Level 3 DeviceN and can produce separated or composite colour output. For colour management, ColorExpress package with powerful Harlequin ICC Profile Processor and device's profile for your printers plus tools to allow you to create further ICC profiles.

RasterPrint Station OUTPUT MANAGEMENT



Media savings with Compose Pack&Print option

Designed to increase job throughput and reduce media usage, the Pack&Print option provides easy-to-use tools for ganging up jobs on a defined print area. Jobs can be automatically positioned with Print&Pack's optimization process or manually placed using drag-and-drop tools and numeric coordinate controls.

Drivers for all popular printers

Compose has given ColorExpress the benefits of 15 years experience interfacing RIPs to inkjet printers, laser printers and copiers. Through close co-operations with different manufacturers, we individually design drivers for all popular large format inkjets and laser printers ensuring maximum productivity and quality for your printer.

Support wide range of file formats and graphic types

File formats: PostScript level 3, 2, 1; PDF 1.7 to 1.0; EPS; JPEG; HD Photo; XPS 1.0; DCS; DCS2; TIFF 6; TIFF/IT-P1 (option)
Graphic types: Type 3 and 4 (including masked images), halftone, contone, 8-bit grayscale, 8- and 10-bit Run Length Encoding (RLE)

Font Support

Demand Loadable Fonts (DLD1)
Type 0, 1, 2 (CFF), 3, 4, 32, 42 (TrueType), and CID fonts

Connectivity

Connections to networks and storage devices can be through Appletalk, Spool, Socket, NTpipe, Serial or Parallel Ports.

Supported devices

| | |
|----------------|--|
| Epson | Stylus Pro 4000, 4800, 7600, 7800, 9600, 9800, 10600 Stylus Pro 4880, 7880, 9880, 11880 Stylus Pro 2400, 4400, 7400, 9400 Aculaser 8600, 9100 |
| HP | DesignJet 800, 5000, 5500, Z2100, Z3100, Z6100 Colour LaserJet 5500, 5550, 9500 Edgeline CM8050, CM8060 |
| Canon | iPF 5000, 6100, 8000S, 8100, 9000, 9000S 9100, W2200, W8400, BJC 8500 |
| OKI | C9600, C9650, DTP3600 |
| Konica Minolta | Bizhub C550, 1050 |

Step-and-Repeat

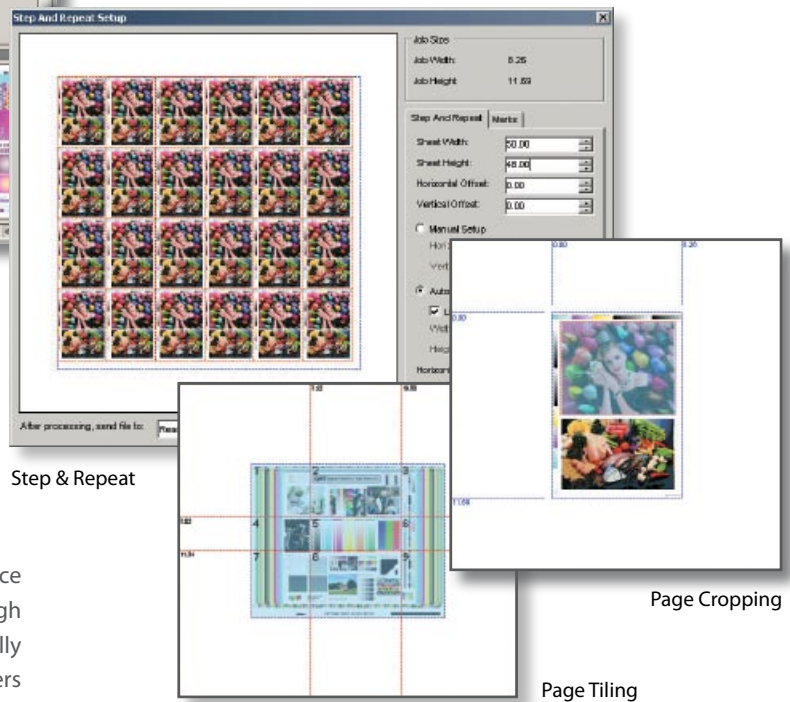
The Step-and-Repeat feature facilitates printing of multiple copies of the same job in a pre-defined area.

Page Tiling

The Tiling features lets you handle jobs larger than the printer by slicing them into smaller "tiles". Overlaps are shown when tiles are printed and the user has control over printing individual tiles.

Page Cropping

The Cropping features lets you print jobs by cropping into a smaller selected area for partial printing.



Step & Repeat

Page Cropping

Page Tiling

Enhanced Job-Based Output Management

New designed RasterPrint Station supports job-based output management for user to print multiple copies of job in laser printers and copiers, providing highest efficient and integration to the latest office colour printing systems.

Support Multi-threaded Processor

Improved multi-threaded rendering that helps remove RIP bottlenecks in handling raster data and takes full advantage of the new Duo and Quad core technologies

System Requirements

Minimum System Requirements:

| | |
|-------------|---|
| CPU: | Pentium IV 2.8GHz or above |
| Memory: | 1GB RAM |
| Hard Drive: | 80GB SATA Disk |
| OS: | Windows 2000 Professional or Server, Windows 2003 server, Windows XP Professional |

Copyright © 2008 Compose. All rights reserved.
Compose logo is the trademark of Compose System Limited and its subsidiaries.
All other brands and product names are trademarks or registered trademarks of their respective owners.
All specifications and price changes are subject to change without notice.
Compose cannot accept liability for any loss or damage arising from the use of information or particulars in this document.