



ElecRoc 5

An Integrated JDF/PDF Pre-press Workflow Solution

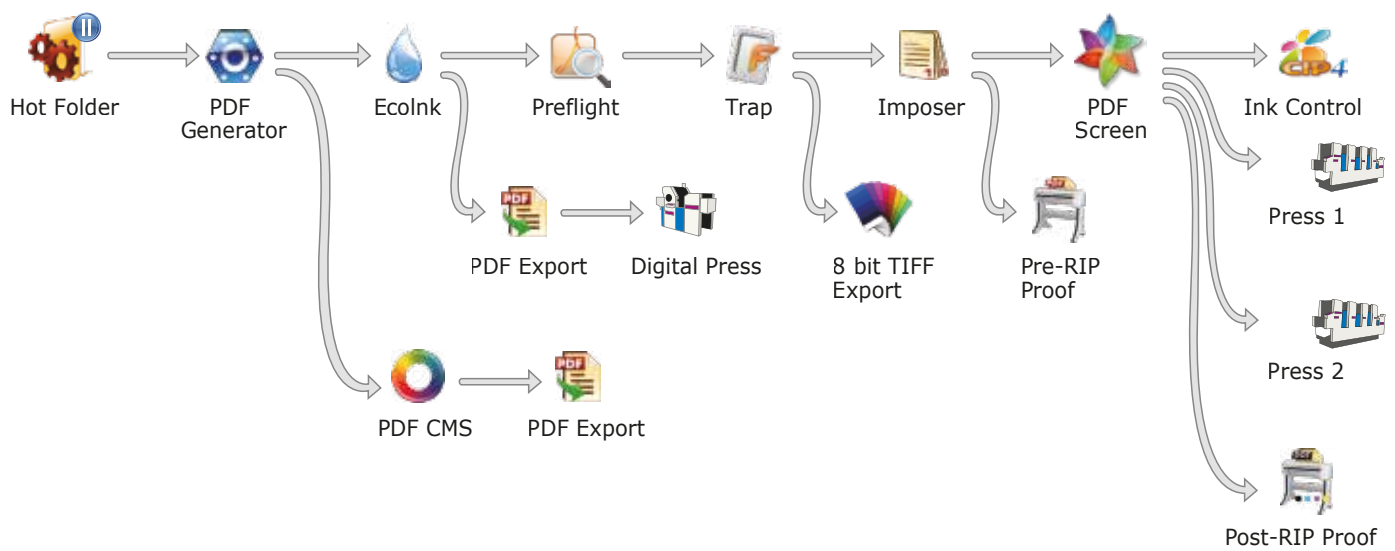
Powerful zone and transparency trapping
Navigator preflight
PDF-based EcoInk (ink saving)
3D preview
Versatile ganging to meet different requirements
Advanced screening



Key Features

- Powerful zone and transparency trapping
- Navigator preflight
- PDF-based EcoInk (ink saving)
- 3D preview
- Versatile ganging to meet different requirements
- Advanced screening
- Packaging solution support
- Load balance
- Supports secure encrypt system to avoid unauthorized operations
- Automatic all-in-one workflow processing mechanism
- Reduce prepress costs and errors, and improve turnaround times
- Embedded native PDF RIP core
- Improved reliability and reproducibility
- Converts bitmap into PDF for preview before output
- Cooperative task management system
- Achieve remote proofing with excellent color management system
- Reliable remote PDF checkout with bitmap embedded
- Process PDF file with transparent object seamlessly
- Fast processes with customized configuration
- Powerful job management system
- Reliable file backup system

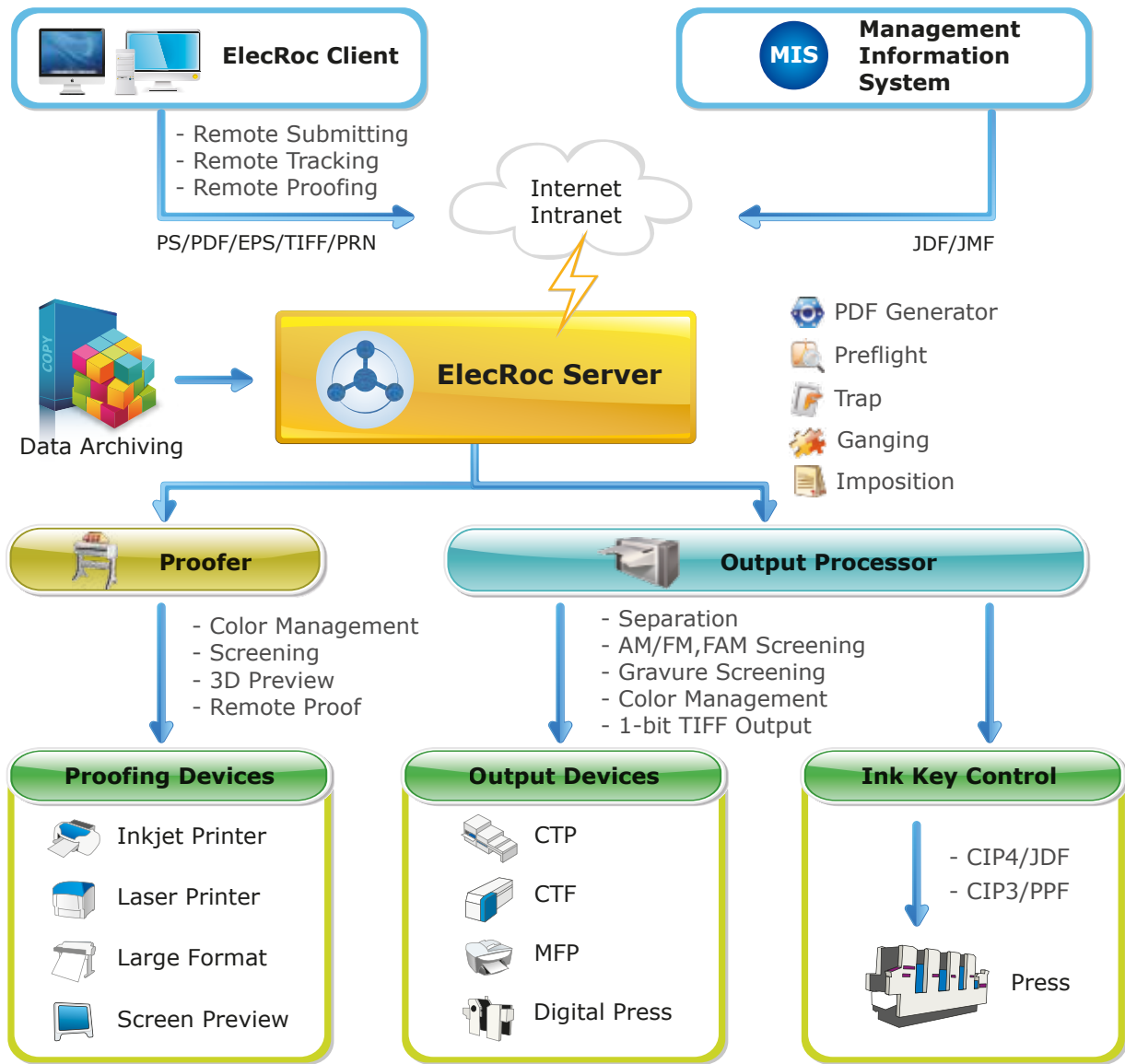
Typical Workflow



Users can access ElecRoc from any PC or Mac client through network. Users can create a Job Ticket by simply dragging and dropping icons. Frequently used workflows can be saved for re-use and to simplify Job Ticket workflow, and workflow modules can be pre-configured with default settings.

A Glance of ElecRoc 5

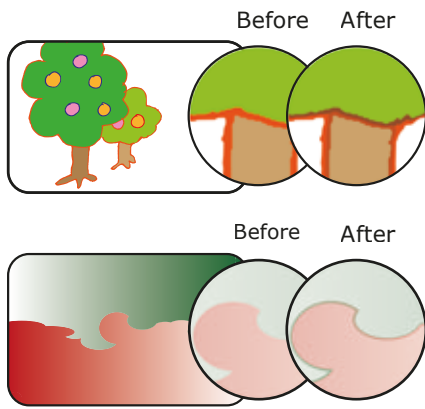
ElecRoc 5 is a fully integrated JDF/PDF pre-press workflow with new system structure to achieve more stability and higher processing efficiency. It has many new modules and functions, more user friendly interface, easier to operate. The job processing is more secure and file management is much easier and more convenient for maintenance.



Functions of ElecRoc 5



ElecRoc is an easy-to-use, scalable workflow solution designed to meet the demands of pre-press professionals. It integrates the latest core technologies from Founder Electronics. ElecRoc provides all the functionality required for job management, integrated JDF/PDF creation, preflight, trapping, imposition, PDF color management, 3D preview, EcoInk, Hi-Fi printing, PDF encryption, PDF comparing, cooperative task management, output balance, zone screening, CIP3 ink control, advanced screen, color/screen proofing, remote proofing, and output device support. ElecRoc combines automation with process control of the entire workflow in real time.



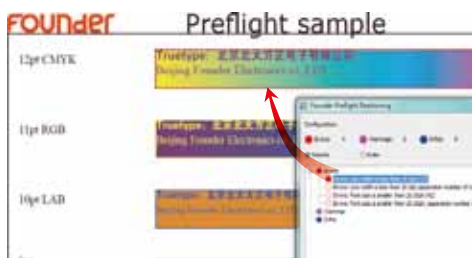
WiseTrap

Founder WiseTrap is based on powerful parameter template settings. It supports trapping between graphics and images, including transparent image and bitmap along with spot colors, and generates smooth sliding traps between bidirectional gradients with sliding trap function. WiseTrap includes auto trap and zone trap. Auto trap is widely used in most jobs to achieve automatic production. Zone trap is used in parts of a job to achieve different trapping results.

Benefit:

- Automatic trap
- Zone trap
- Transparency trap

Navigator Preflight

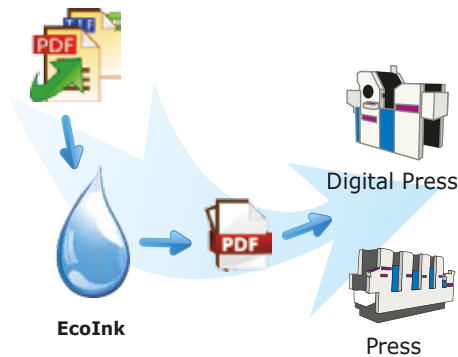


Founder ElecRoc has a PDF preflight module to ensure everything necessary for a job is present. It has automatic or manual operation by templates setting. Preflight result can navigate to object of the file and easy to check or change.

Benefit:

- Auto preflight with template
- Individual setting of preflight node
- Navigate to object
- Send preflight results automatically

EcoInk



Founder EcoInk (ink saving) is built in color management module developed by Founder converts color accurately by loading open industry standard or the customer's ICC profile. It is setup different ink saving parameters according to different press requirements and degree of ink saving, and respectively controls RGB and CMYK formats, images, graphics and spot colors. Printing ink amount can be saved up to 20% by using EcoInk.

Benefit:

- Green printing
- Low carbon
- Saving cost with achieving high color reproduction.

3D Preview



According to the page sequence of a finished book or magazine, 3D Preview shows a real flash of turning pages. It is more accurate to show the final effect of the job, saving the time of printing signature and then fold into a finished book.

It will support remote web preview in next version. *

Benefit:

- Intuitive flash result
- Save time and money



Imposition and Versatile Ganging

ElecRoc Imposition Processor allows users to apply imposition signature templates for CTP jobs. Users can configure binding type, creep control, bleed control and page location control. Users can also instantly see previews and make last minute changes to the imposition. The final imposition is JDF based, thus increasing the processing speed.

The brand-new Ganging module provides powerful ganging functions to meet requirements of short-run printing, commercial printing. It supports interactive ganging on double sides, auto arrange, auto by pass, step and repeat, supports page number, auto mark, etc. The new ganging meets the requirements of most complex binding types.

Benefit:

- Origami to make template intuitively
- Work and Turn, Work and Tumble
- Step and repeat used for digital printing



Simulation Diagram

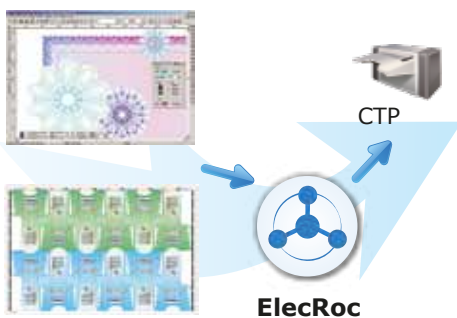
Advanced Screening

EagleFAM is based on the technology that utilizes 7.5 angle screening in midtones and adopts FM screening in highlights and shadows. Overcomes the weaknesses and combines the advantages of both conventional AM and conventional FM screening. It achieves stable quality by using AM screening in midtones. Eliminate rosettes and moiré patterns created by low screen angle frequency.

EagleFM: Based on green noise FM technology & Founder Second Order FM Technology using variable dot size and variable spacing. Control the randomness of dots, ensuring smooth middle tones. Smooth transition of continuous tones, keeping details in overlapping colors. Light area and shadow area can use different dot sizes for ease of use on press and expanding the color gamut.

Benefit:

- High quality printing for high end users
- Smooth tone and more details on printing



Solution for Package Printing

ElecRoc package printing solution accepts the results of Founder Anti-counterfeiting design (SuperLine) and packing program including trap, ganging, spot, etc. All the designs or signatures can be output to CTP effectively via ElecRoc.

Benefit:

- High effective output

PDF CMS

The new PDF Color Management module is a PDF-level CMS. It is easy to achieve all sorts of color transformations with its powerful functions. Using PDF CMS, customers get value-added, for example, Hi-Fi printing, soft proofing on screen and it supports remote verification or signature which is based on PDF.

Benefit:

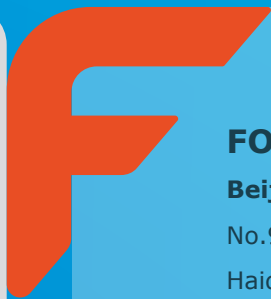
- Flexible
- Convenient



Recommended System Configuration

	Hardware	Software
Master Server	CPU: Intel® Dual-Core Xeon 2.66GHz Memory: 4 Gigabyte or above Hard Disk: 120GB or above, High Speed SCSI Display: 1024 x 768 Color, 32 bit true color	Windows Server 2003 SP2 Windows Server 2008 64 bit
Slave Server	CPU: Pentium IV 3.0 GHz or above Memory: 2 GB or above	Windows 2003 SP2 Windows XP Windows 7 Windows 2008 64 bit
Mac Client	CPU: G5 2.5 GHz Memory: 2 GB or above Display: 1024 x 768 Color, 32 bit true color	Mac OS X 10.5 Mac OS X 10.6
PC Client	CPU: Dual-Core 2.8 GHz or above Memory: 2 GB or above Display: 1024 x 768 Color, 32 bit true color	Windows XP Windows 2003 SP2 Windows 7 Windows 2008 32 bit
Network	100MB Ethernet	

Founder and Founder logo are registered trademarks of Founder Group Corporation. ElecRoc, EagleRIP, EagleProof, EagleDot, EagleFAM, EagleAGS, SuperLine and DocuDefend are registered trademarks of Beijing Founder Electronics Co., Ltd. CIP4 and the CIP4 logo are trademarks of the CIP4 Organization. JDF and the JDF logo are trademarks of the CIP4 Organization. Other product, font and company names and logos in this document are trademarks or registered trademarks of their respective holders and are hereby acknowledged.



FOUNDER

Beijing Founder Electronics Co., Ltd.

No.9, 5th Street, Shangdi Information Industry Base
Haidian District, Beijing 100085, China

International Business Division

Fax: +86 10 62981440

Email: GASales@founder.com.cn

For more products, sales and technical support information,
please visit our website at <http://www.founder.com.cn/en>