

Express ColorFlow is a complete solution for managing and automating workflow when you're producing color proofs and digital prints. Founded on Compose System's popular Express WorkFlow and Color Express RIP, Express ColorFlow includes many valuable functions for an all-in-one RIP Once proofing package. It is a perfect proofing solution for service bureaus, trade shops, quick printers, digital output centers, and in-house graphic departments.



Workflow Family

The Complete Solution for
Digital Colour Proofing

Express ColorFlow

Overview

Whether you're producing color proofs or printing large format posters and composites that demand top quality color reproduction, your choice of RIP and proofing workflow solution is just as important as your choice of the color printer itself. Your printer may have a great specification but it will only live up to its promise with a front-end that can deliver image quality and features and performance which ensure maximum productivity.

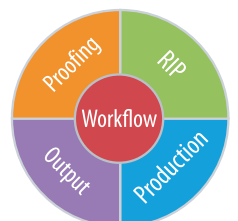
Express ColorFlow gives you all this and more - and at a great price!

- Easy-to-use workflow configurator
- Browser-based job management and submission
- DI Proof proofing software
- ICC Color Management
- Back2Back for double-sided printing
- Flatout Express reducing media wastage
- Image cropping
- Step-and-repeat functions
- Tiling for oversize jobs
- Soft Proofing for client approvals
- Raster PrintStation with one printer driver
- Support additional Harlequin-based ColorExpress RIP

compose

An Open Future

www.compose.com.hk www.compose.co.uk www.composeusa.com



Express ColorFlow

Features & Benefits

One-click configuration to set up your workflow in seconds

Express ColorFlow's intuitive system configurator lets you set up new workflows in just a few minutes. Each module is represented by an icon in the toolbar and with a single click can be positioned and connected to other modules. It can save your time on configuration and move your jobs quickly and easily between saved workflows to make changes in both local and remote systems.

Flexible job capture for all popular data formats

Express ColorFlow handles input data in all popular formats - including PostScript, PDF, EPS, PCL and 1-bit TIFF. Using drag-and-drop or save, job streams are directed to hot folders which are continuously monitored by Express ColorFlow. Jobs can also be submitted using the Web Application. The Spool folder takes single file jobs and the Composer Module manages the delivery of jobs with multiple PostScript or PDF files into the workflow. Raster Import handles ripped halftone files for processing by Express ColorFlow - accepted formats include any 1-bit TIFFs, NetFlow Raster and Harlequin PGB.

Manage jobs anytime, anywhere

Accessible through an internet browser, Express ColorFlow's database holds information about all jobs in the system - so you can submit, monitor and control jobs locally or remotely from any desktop computer. You get a complete picture of current workflows in the browser window and by clicking on any point of the process you can gain direct access to the local job manager - providing exactly the same controls in the browser that you have in Express ColorFlow itself wherever you are.

Flexible delivery of soft proofs to your clients

The Internet module enables user to set up automated production of composite PDF files for soft proofing - so your clients can approve their jobs quickly and efficiently ... even down to checking actual dots! ColorFlow gives you the facilities to automate delivery of PDF files for client approval in any of three ways:

- Email to specified email address
- Upload to a ftp server with the link emailed to specified email
- Upload to a http server with access through a web page which lists jobs for review and provides links for PDF downloading

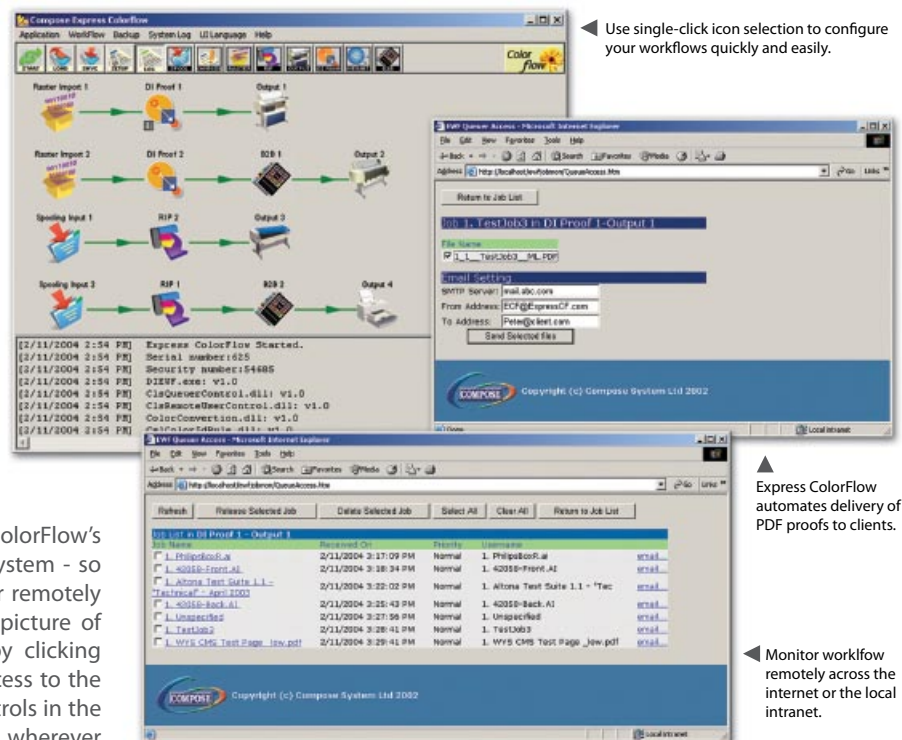
Reduce consumables costs with Flatout Express

Flatout Express is an efficient media saving solution that provides both automatic and semi-automatic packing methods particularly suited to production runs where jobs are of similar size. Designed for use with the Color Express RIP, Flatout Express collects and packs Harlequin PGB files onto a user- defined sheet. When a sheet is full, a layout file is created and passed back to the RIP for merging high resolution PGB files into single files suitable for output.

Ideal RIP for Color Proofing solution

At the heart of Express ColorFlow, Color Express from Compose is the ideal RIP for digital color printing solutions. Based around the high performance Harlequin Classic RIP, Color Express offers interfaces for all popular large format inkjet printers and A3+ laser printers. With an easy-to-use console and powerful color

management and screening capabilities, Color Express is a comprehensive solution for graphic arts professionals. And you can be up and running in minutes with an installer that automatically sets up the complete suite of software including color profiles for your printers.



Intuitive user interface for easy operation

In a busy prepress environment many straightforward jobs can be processed with standard RIP settings and minimal operator intervention. To increase productivity in this situation Compose has re-engineered the user interface of the Harlequin RIP with a clear, intuitive console which provides quick and easy setups for routine operations. And for the management of more complex jobs, the new user interface also allows direct access to the full range of RIP controls and settings.

2-bit screening technology for improved image quality

In addition to Harlequin Dispersed Screening, which is included in the ColorFlow package for use with any color printer, the Color Express RIP provides 2-bit Screening for even higher quality color reproduction on Epson inkjet printers such as the Stylus Pro 4000, 7600, 9600 and 10600. Equipped with Epson's Variable Sized Droplet Technology, these printers are compatible with the Color Express 2-bit Screening system for selection of optimal dot sizes during image processing and improved reproduction of, for example, subtle tonal variations.

ICC Color Management with ColorPro

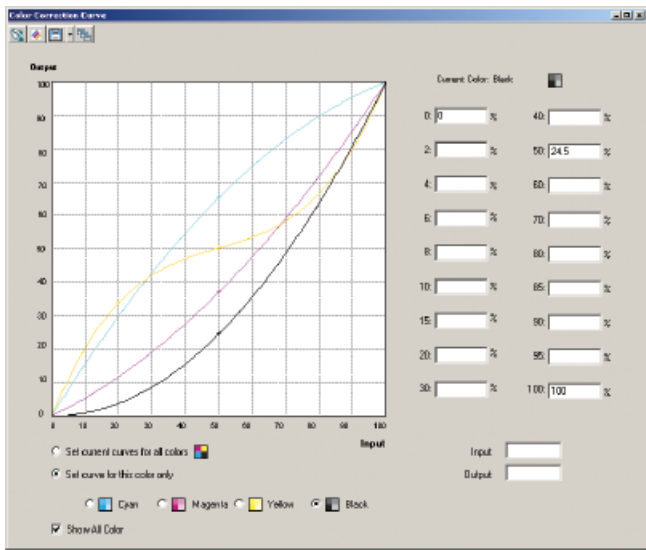
Color Express supports the full implementation of PostScript LL3 DeviceN producing separated or composite color output. For device- independent color management the standard Color Express package has the powerful Harlequin ColorPro and includes profiles for your selected printers plus tools to allow you to create further ICC profiles.

Reduced print times and enhanced quality

DI Proof (DataIntegral Proof) is a state-of-the-art proofing module which extracts maximum quality and efficiency from Epson high-end inkjets such as Stylus Pro 4000, 7600, 9600. Creating color-managed proofing files from separations produced by Color Express, DI Proof lets you output directly to the Epson printer's HTM module without further RIPping to ensure top quality output and reduce the time you wait for your proof. And if you are producing proofs on other printers it's simple - you use the Color Express RIP for screening.

Under the hood ...

Letting you control the resolution at which it is operating, DI Proof downsamples separated data which is then recombined to produce a composite for the proofer. By selecting higher resolutions for downsampling you can create proofs which partially reproduce the dot patterns of the original separations making it possible to see actual rosettes on the proof.



▲ DI Proof's Color Calibrator allows user to automatically or manually reverse the RIP calibration curve.

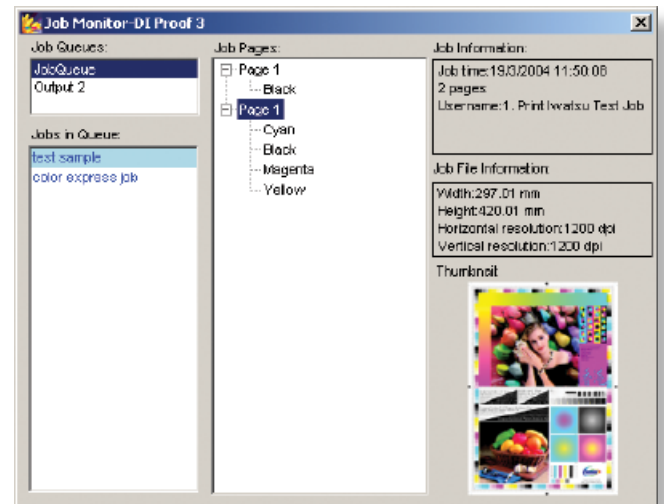
Back2Back - simple, reliable duplex proofing

Back2Back is a precision manual turning solution for duplex proofing on Epson's large format printers (7600, 9600, 10000, 10600). With its simple-to-use, intuitive user interface, Back2Back produces double-sided proofs of booklets and brochures with precise correspondence between elements on the of the sheet. Ideal for realistic proofs for your customers, Back2Back not only saves the cost of production errors but also helps create new sales opportunities and generate additional revenues by making it quick and economical to produce a color accurate folded mock-up for presentation to your customers.

Precision from the Epson optical alignment system

Back2Back uses the optical alignment system available in Epson printers. As the first step you print an alignment sheet to measure the offsets required to properly align the printer heads. Then, when a sheet of paper is placed into the input slot, it is lined up automatically. The first side of the proof is then printed, the sheet removed from the bottom of the Epson and reloaded in reverse to print the second side. Alignment accuracy with Back2Back can be within plus or minus 0.1 mm subject to overall accuracy depending on how precisely the Epson printer is aligned.

▼ DI Proof's Job Monitoring gives clear feedback on work in the queue.



▲ Use Back2Back to produce color-accurate mock-ups of customer jobs - quickly and easily

Output with Raster PrintStation locally and over the Internet

Raster PrintStation gives you all you need to control and monitor jobs in the output queue. Taking rastered data in TIFF, NetFlow Raster or Harlequin PGB format from the workflow, Raster PrintStation provides you with facilities to set up your output device and lets you preview, hold and release queues, redirect jobs and reorder jobs in the output queue - either locally or remotely through a standard internet browser. Additional functions for cropping, tiling and step-and-repeat are also provided.

Step-and-Repeat

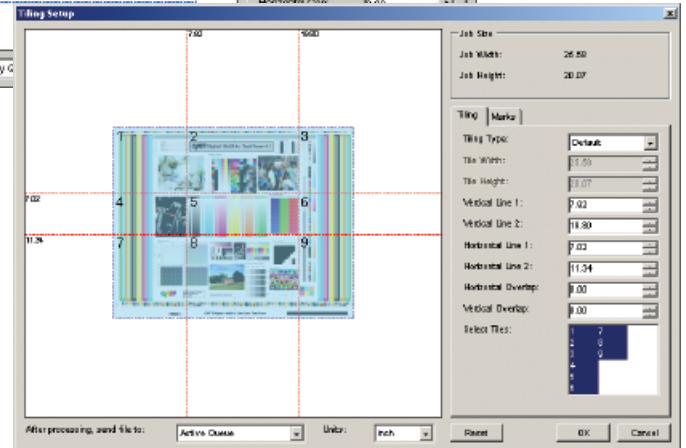
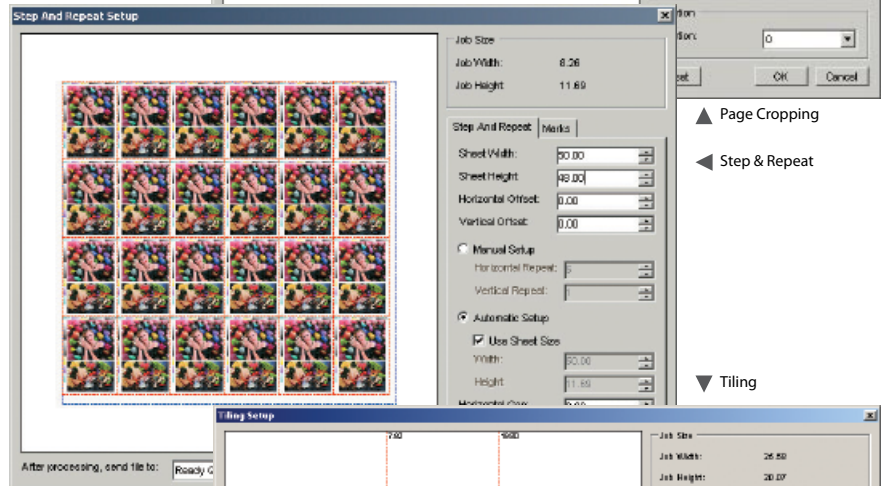
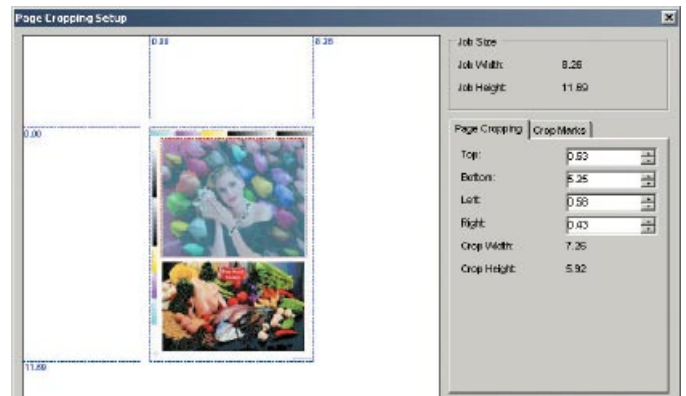
Express ColorFlow provides a step-and-repeat feature which lets you print multiple copies of the same job in a pre-defined area, quickly and easily. Handy for producing multiple proofs of a job for client's use and in house reference, this facility offers accurate controls for positioning the repeated job in horizontal and vertical directions.

Flexible tiling for oversized jobs

The Express ColorFlow tiling feature lets you output jobs with larger dimensions than the printer format by slicing them into smaller tiles, showing overlaps when tiles are printed and giving the user control over the printing of individual tiles. The easy to use visual interface provides instant feedback on how you decide to segment your jobs and the precision of operation required to give the very best results.

Drivers for all popular printers

Compose has given Express ColorFlow the benefits of fifteen years experience interfacing RIPs to inkjet printers, laser printers and copiers, imagesetters and platesetters. Through close technical co-operations with manufacturers such as Epson, Minolta, Encad, Seiko, Mutoh, Roland and Hewlett-Packard, Compose has been able to fine-tune their drivers for many different color printers. As a result, Express ColorFlow now offers individually designed drivers for all popular large format inkjets and laser printers ensuring maximum productivity and print quality for whichever printer you select.



System Specifications

Input File Formats

Accept wide range of file format:

- 1 Bit Tiff, Compose Netflow Raster, Harlequin PGB
- PostScript Language Level 3, 2, 1 (with RIP options)
- PDF 1.7, 1.6, 1.5, 1.4, 1.3, 1.2 (with RIP options)
- EPS, JPEG, GIF, XPS 1.0, HD Photo (with RIP options)

Enhance RIP Options

- ColorExpress RIP (Signature)
- Express RIP (Full, Lo-res)

Supported Large Format Plotters & Office Printers

Epson	Stylus Photo 2100, 2200, 2400 Stylus Pro 4000, 4400, 4800, 5000, 5500, 4880 Stylus Pro 7000, 7400, 7500, 7600, 7800, 7880 Stylus Pro 9000, 9400, 9500, 9600, 9800, 9880 Stylus Pro 10000, 10600, 11880 Aculaser 8600, 9100
Hewlett Packard	DesignJet 10PS, 20PS, 50PS, 500, 800, 1050c DesignJet 2000, 2500, 3000, 3500, 5000, 5500 DesignJet Z2100, Z3100, Z6100 Edgeline CM8050, CM8060 Color Laserjet 9500, 5500, 5550
Canon	BJC-8500, W-2200, W-6400, W-7200, W-8200, W-8400 iPF 5000, 6100, 8000S, 8100, 9000, 9000S, 9100
OKI	Digital Color Printer C9600, C9650
Konica Minolta	Bizhub C550, 1050

System Requirements

Recommended:

- Intel® Core™ 2 Duo Processor
- 2 GB RAM
- 80 GB SATA hard disk
- 100 base-T Ethernet card- CD ROM / DVD ROM
- Windows 2003 Server with latest service pack

Copyright © 2008 Compose. All rights reserved.
Compose logo is the trademark of Compose System Limited and its subsidiaries.
All other brands and product names are trademarks or registered trademarks of their respective owners.
All specifications and price changes are subject to change without notice.
Compose cannot accept liability for any loss or damage arising from the use of information or particulars in this document.