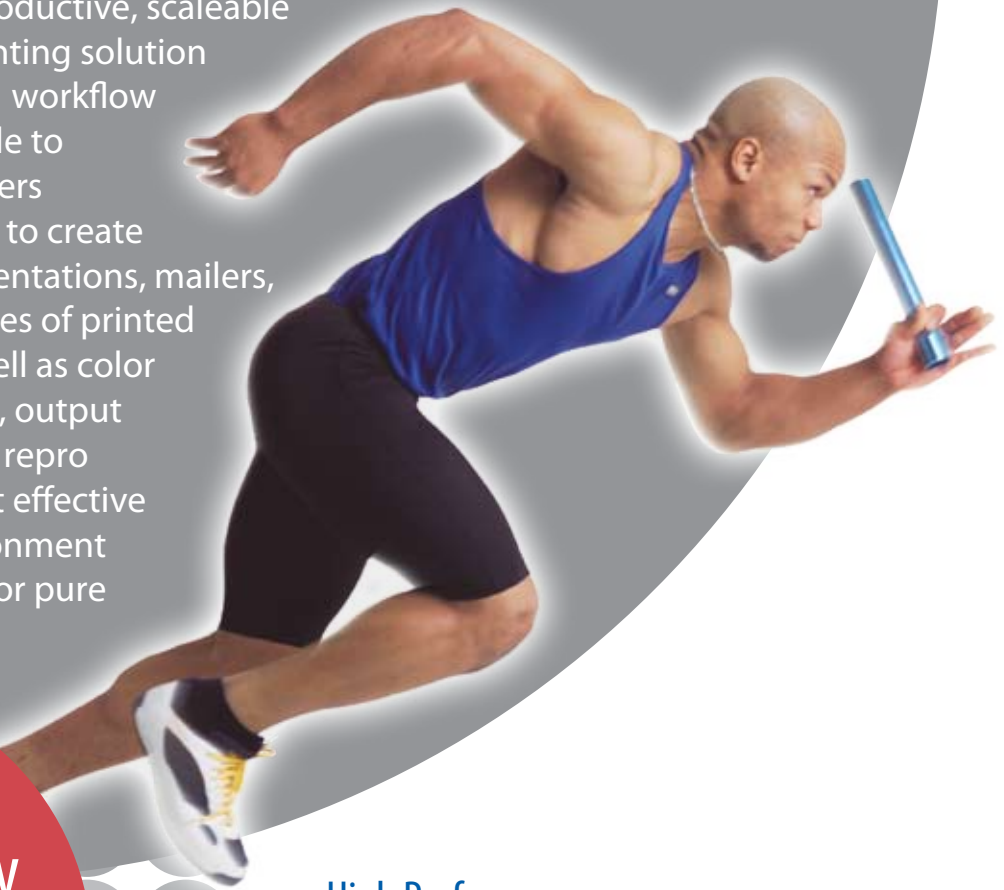


Express PrintShop is an open, productive, scalable and affordable on-demand printing solution in the market. As a professional workflow system, Express PrintShop is able to connect multiple network printers through a single RIP controller, to create high-impact color reports, presentations, mailers, banners, labels, and various types of printed business communications as well as color proofing in newspapers houses, output centers, advertisement agency, repro houses, press factories; at a cost effective and centralized in-house environment whether you are handling PDF or pure PostScript® workflow.



## Workflow Family

A seamless approach to  
Digital Printing Workflow

**Express PrintShop**

### High Performance

- Harlequin-based Express RIP at heart

### Cluster Printing

- Print to printers simultaneously or individually

### Load Balancing

- Share job between connected printers

### Fault Tolerance

- Automatic Job Diversion

### Booklet Printing

- Turn masterpieces into professional booklet

### Excellent Color Stability and Accuracy

- Built-in Harlequin ColorPro™ Technology

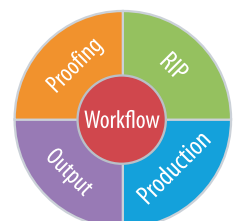
### Easy Job Handling

- Handle jobs via Appletalk, Spool Folder

### Real Time Device Monitor

- monitor consumable usage and device status

**compose**



An Open Future

[www.compose.com.hk](http://www.compose.com.hk) [www.compose.co.uk](http://www.compose.co.uk) [www.composeusa.com](http://www.composeusa.com)

# Express PrintShop

## Overview

Express PrintShop is an open, powerful, and productive in-house printing solution in the market. This product offers unmatched system performance, color accuracy, extensible variable data printing support, and superior workflow management. It is cater to mission-critical environments such as newspapers houses, advertisement agencies, output centers, repro houses, and commercial printers.

## Features & Benefits

### Advanced WorkFlow Management

The development of Express PrintShop is originated from high-end prepress workflow management tools - Express WorkFlow. Express Printshop combines all the practical functionality, with ease of use, tight integration and smooth data delivery between all features in your job environment. Express Printshop optimizes and automates your production process and ensures data integrity.

### High Performance Engine

The core of Express PrintShop server is the Ultra-fast Harlequin-based Express RIP. Compose's Express RIP offers a high degree of productivity combining speed and flexibility, with a rich set of features, the Express RIP uses open standards that improve functionality for on-demand printing. It can handle a wide range of file formats, including PostScript, PDF, EPS, PCL and 1-bit TIFF. Jobs can also be submitted via hot folders, or directly through Apple Talk, enabling users to work in network environment.

### Cluster Printing

Express PrintShop cluster printing feature lets you spread your output across a group of printers automatically. This feature dramatically increases printing speed and achieves maximum throughput of large print jobs across multiple printers.

### Load Balancing

Express PrintShop load balance feature allows user to share jobs between connected printers. It dramatically reduces print time and eliminates bottlenecks ensuring highest productivity.

### Fault Tolerance

If at any time, the printer is found out of paper or at fault, the job diversion feature will divert your job to other printers automatically. This feature prevents your production to slow down from any printer's faults.

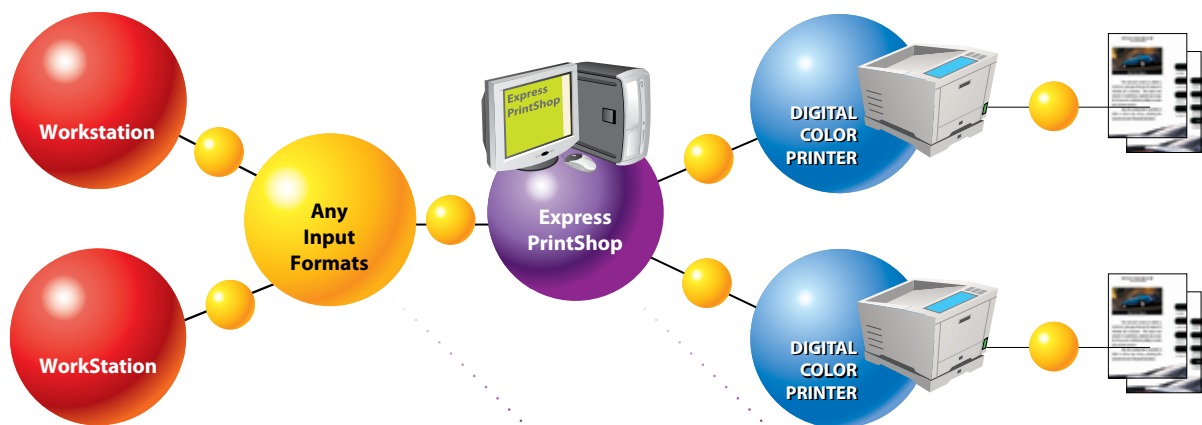
### Easy Job Handling

Express PrintShop handles jobs via hot folders, or directly through Apple talk. It can be connected to your network (PC- or Mac-based) via a 10/100 base-T internal server or an optional wireless network. It also features high-speed USB v2.0 and parallel interfaces.

### Excellent Color Stability and Accuracy

Using Harlequin ColorPro™ (building on Harlequin ICC Profile Processor™ (HIPPTM) and Harlequin Full Color System™ (HFCS™)) technology, Express PrintShop provides excellent color control, gives accurate, consistent and predictable color reproduction.

## Express PrintShop Workflow



### Any Application

Using your design application:

- Adobe Illustrator®
- Adobe InDesign®
- Adobe PageMaker®
- Corel®
- MS Word®
- Quark XPress®

### Any Input Formats

Wide range of file formats:

- PostScripts® Level 3,2,1
- Adobe® PDF 1.7, 1.6, 1.5,...
- EPS, JPEG, GIF, PCL4
- XPS 1.0, HD Photo
- 1 Bit Tiff, 8 Bit Tiff, TIFF-IT
- DCS, DCS 2
- TIFF 6, TIFF/IP-P1 (Optional)

### Express PrintShop

Top quality and performance:

- Harlequin® PostScript® Level 3 RIP
- Harlequin® ColorPro ICC Processor
- Booklet Printing
- Cluster Printing
- Fault Tolerance
- Real Time Device Monitor
- Advanced Job Management
- Variable Data Printing (Optional)

# Express PrintShop

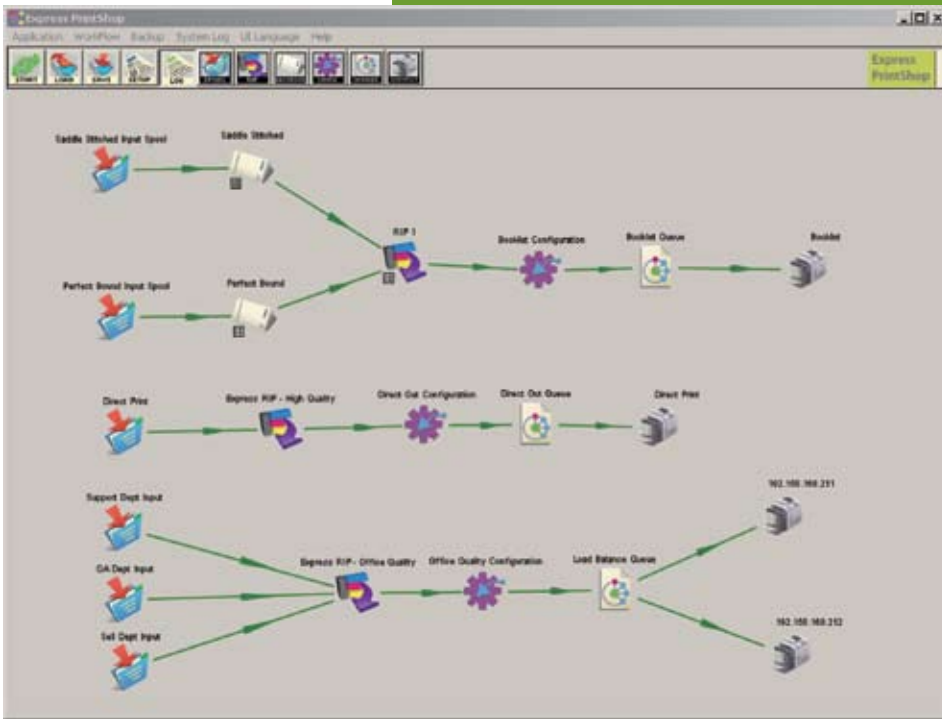
An Open Ended Cluster Printing Solution

- cluster printing
- color management
- color calibration
- booklet making
- variable data



An Open Future

[www.compose.com.hk](http://www.compose.com.hk) [www.compose.co.uk](http://www.compose.co.uk) [www.composeusa.com](http://www.composeusa.com)



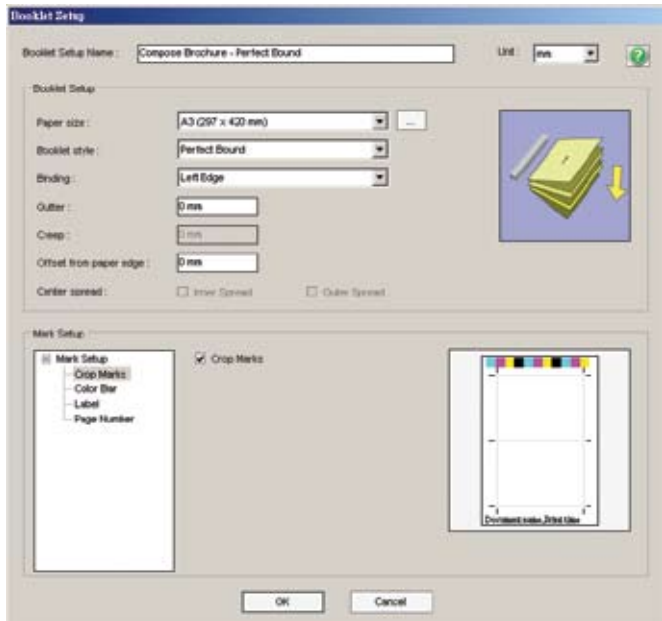
Multiple workflows in Express PrintShop

## Variable Data Printing (Optional)

Incorporated with the VDP suite, Express PrintShop offers the most economic, quick and easy personalized printing solution. The VDP suite enables user to create a document from any application integrated with variable elements, then output connecting high performance Digital Color Printer with accurate and consistent color reproduction. It can greatly shorten the printing process, increase your productivity, and makes variable printing to an one-step process.

## Booklet Printing

The intuitive feature enables on demand book printers to produce professional booklets with minimal fuss. Express PrintShop EasyBook module gives you eight different booklet styles, including perfect-bind, saddle-stitched, cut-and-stack, step-and-repeat, simple page pairing, fill sheet, desktop calendar and wall calendar styles. It allows user to do professional booklet and increases the productivity by cutting the print run in half.



Booklet Setup in EasyBook module



Bi-directional communication with printers to monitor status of the machine

## Real Time Device Monitor

Express PrintShop provides the user a real time check on the consumable usage and device status information in each of their output machines. Through the status monitor, user will know the ink level, cassette paper sizes and paper level, installed accessories like stapler, as well as printer messages. Users will have a better understanding on their production machine without loading other application. If one machine is down, users will know what the problem is and act accordingly to minimize the down time

## Advanced Job Management

In a demanding print environment, Express PrintShop offers a powerful management tools to re-prioritize and manage jobs in your system. The advanced queue management tools eliminate bottlenecks and minimize downtime, resulting in higher productivity and profitability.

# System Specifications

## Input File Formats

Accept wide range of file format:

- PostScript Language Level 3, 2, 1
- PDF 1.7, 1.6, 1.5, 1.4, 1.3, 1.2
- EPS, JPEG, GIF, XPS 1.0, HD Photo
- 1 Bit Tiff, 8 Bit Tiff, TIFF-IT
- DCS, DCS 2
- NFR
- TIFF 6
- TIFF/IT-P1 (Optional)

## Enhanced Output File Formats (if RIP option enabled)

- CIP3
- DI format
- Ink key in PDF

## Network Protocols

- Appletalk, Spool, Socket, NTPipe, Serial, or parallel ports.

## Font Support

- Demand Loadable Fonts (DLD1)
- Type 0, 1, 2 (CFF), 3, 4, 32, 42 (TrueType)
- CID Fonts
- Morisawa Fonts CID/OCF (Optional)
- Base 35 core Linotype Fonts (optional)

## Screening

- Harlequin Precision Screening™ (HPS™)
- Harlequin Dispersed Screening™ (HDS™)
- 1-bit Harlequin Error Diffusion Screening™ (HEDS1) (optional)
- 2-bit Harlequin Error Diffusion Screening™ (HEDS2) (optional)

## Color Management

- Harlequin ColorPro™
- Support ICC Profiles Calibration, Dot Gain, Tone Curve Controls
- Support for N-Color and gray profile ICC 4.0 profiles
- Genlin Utility: auto-import of calibration values
- Support PostScript CRDs

## Compatible Office Printers

- HP Edgeline CM8050, CM8060  
Color Laserjet 9500, 5500, 5550
- OKI Digital Color Printer C9600, C9650
- Epson Aculaser 8600, 9100
- Konica Minolta Bizhub C550, 1050

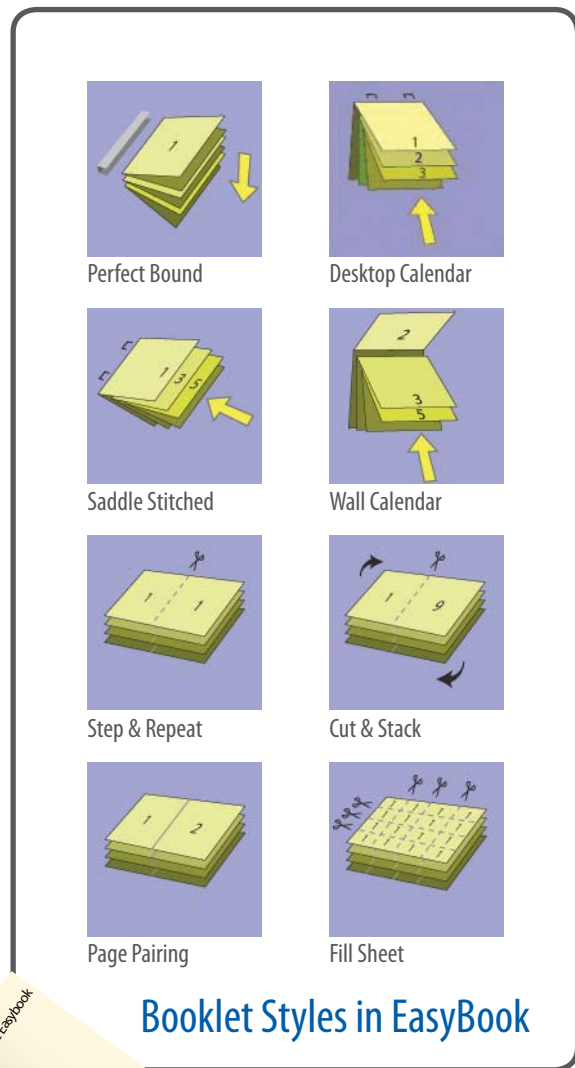
# System Requirements

## Recommended:

- Intel® Core™ 2 Duo E6420 Processor  
(2.13GHz, 1066MHz, 4MB cache)
- 2 GB RAM
- 80 GB SATA hard disk
- 100 base-T Ethernet card
- CD ROM / DVD ROM

## Recommended Operating System:

- Windows 2003 Server with latest service pack



## Booklet Styles in EasyBook



Copyright © 2008 Compose. All rights reserved.

Compose logo is the trademark of Compose System Limited and its subsidiaries.

All other brands and product names are trademarks or registered trademarks of their respective owners.

All specifications and price changes are subject to change without notice.

Compose cannot accept liability for any loss or damage arising from the use of information or particulars in this document.