

Compose Express FlexoFlow provides reliability and efficiency to meet the ever changing demands of today's flexo printing industry. A professional prepress workflow system, Express FlexoFlow combines practical functionality with ease of use ensuring tight integration and smooth data delivery between all processes in your prepress workflow. Express FlexoFlow optimizes and automates your production process and ensures data integrity, whether you are handling PDF or pure PostScript® workflow.



## Workflow Family

A seamless approach to prepress workflow

## Express FlexoFlow

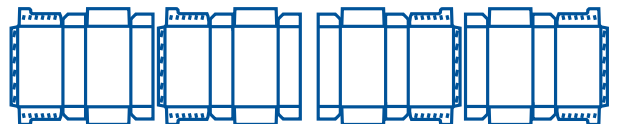
### Tailored for Flexo & Packaging Industry

Express FlexoFlow is a new simple production workflow system tailored for the growing flexographic and packaging market. It is built around our most popular Express WorkFlow architecture, it includes as standard specific flexographic and packaging modules such as BoxPro, trapping, hybrid screening, Star Proof, Plate Controller, etc. This workflow solution allows greater flexibility for user to configure different work path for different jobs.

### Modular Based Workflow Architecture

Based on our Express WorkFlow architecture, Express FlexoFlow is a modular solution designed to give you maximum reliability and expandability. At its heart is the Compose Express RIP – a fast, flexible version of the Harlequin RIP tailored to provide the high levels of performance and productivity you demand. And with browser-based job monitoring, submission and control, you can manage the jobs in your system from wherever you are.

Powerful suite for packaging production.



### Excellent for Flexo Printing

*Enhanced Trapping & Screening*

*Advanced Box-Data Library*

*Illustrator Plug-in for 3D Modelling*

*Illustrator Plug-in for Imposition*

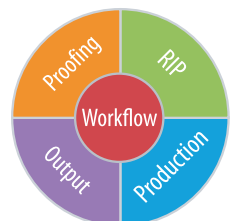
*PDF or 1-bit Tiff Job Imposition*

*Ideal Packaging Proofing*

**compose**

An Open Future

[www.compose.com.hk](http://www.compose.com.hk) [www.compose.co.uk](http://www.compose.co.uk) [www.composeusa.com](http://www.composeusa.com)



# Excellent Features for Flexo Printing

## Powerful Trapping

Express Trap is a powerful trapping module complementary to the Harlequin RIPs, it provides flexible and accurate, automatic and interactive in-RIP trapping. The easy-to-use interface allows users to create special trap zones with custom trapping parameters to ensure complex print jobs are trapped correctly in flexo printing.

## Enhanced i-Tone Hybrid Screening Technology

i-Tone is a powerful, fast, yet simple, extra additional component for Express FlexoFlow. It is a plug-in to Express Trap to generate screened 1-bit TIFF files directly out of Express Trap in a single pass. i-Tone gives you more choices and capabilities than most rips can offer.

## Powerful Flatworking Packages

New and much improved imposition software Plate Controller for jobs placement. Users have complete control on every aspect of job placement, including the placement of job pages, left-and-right gutters, front-and-back margins, and step-and-repeat for every special job handling. Users can also create template for faster retrieve of plate layout and step-and-repeat setting for

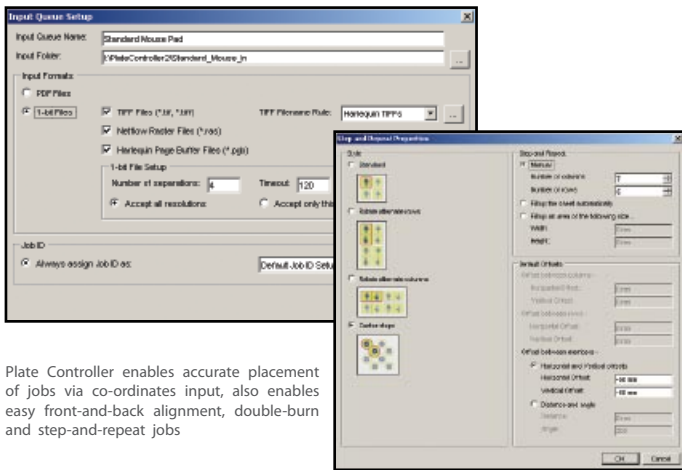


Plate Controller enables accurate placement of jobs via co-ordinates input, also enables easy front-and-back alignment, double-burn and step-and-repeat jobs

For regular job's step-and-repeat, Plate Controller will fill-in the job automatically by simply drag-and-drop the job to pre-defined template.

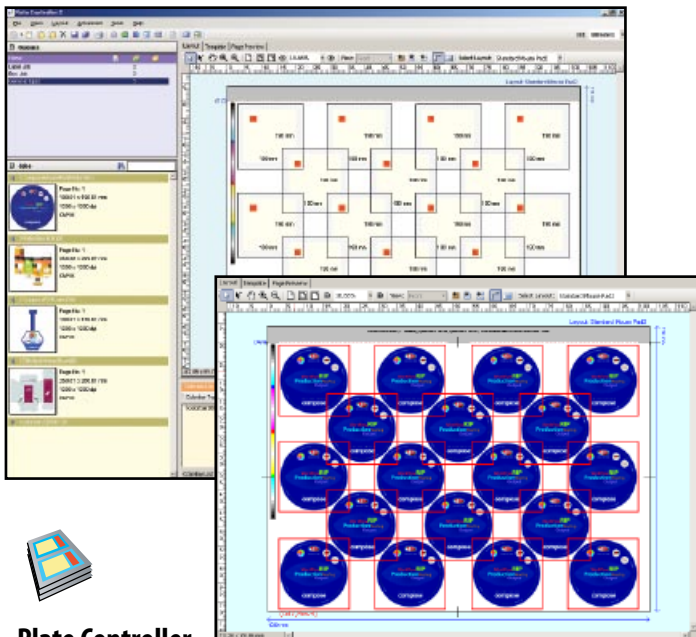
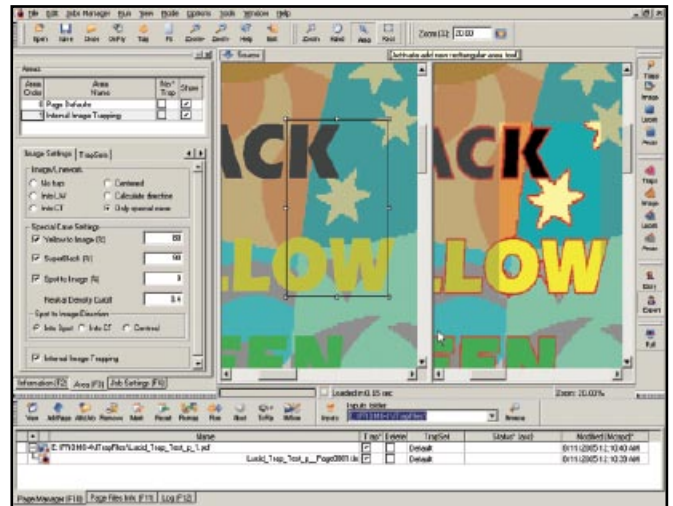


Plate Controller



Trap On Fly is a powerful option for the Viewer that helps you see and adjust trapped results without printing the proofs.

## Trap On Fly Viewer

Express Trap Viewer allows you to open the source page data, select a part of the page and apply trapping "on-the-fly" to immediately view the results. This could be repeated with modified trapping parameters until the desired results are achieved. Then the trapped page can be saved to disk for output or further processing. The original data is not overwritten; so its integrity is maintained.

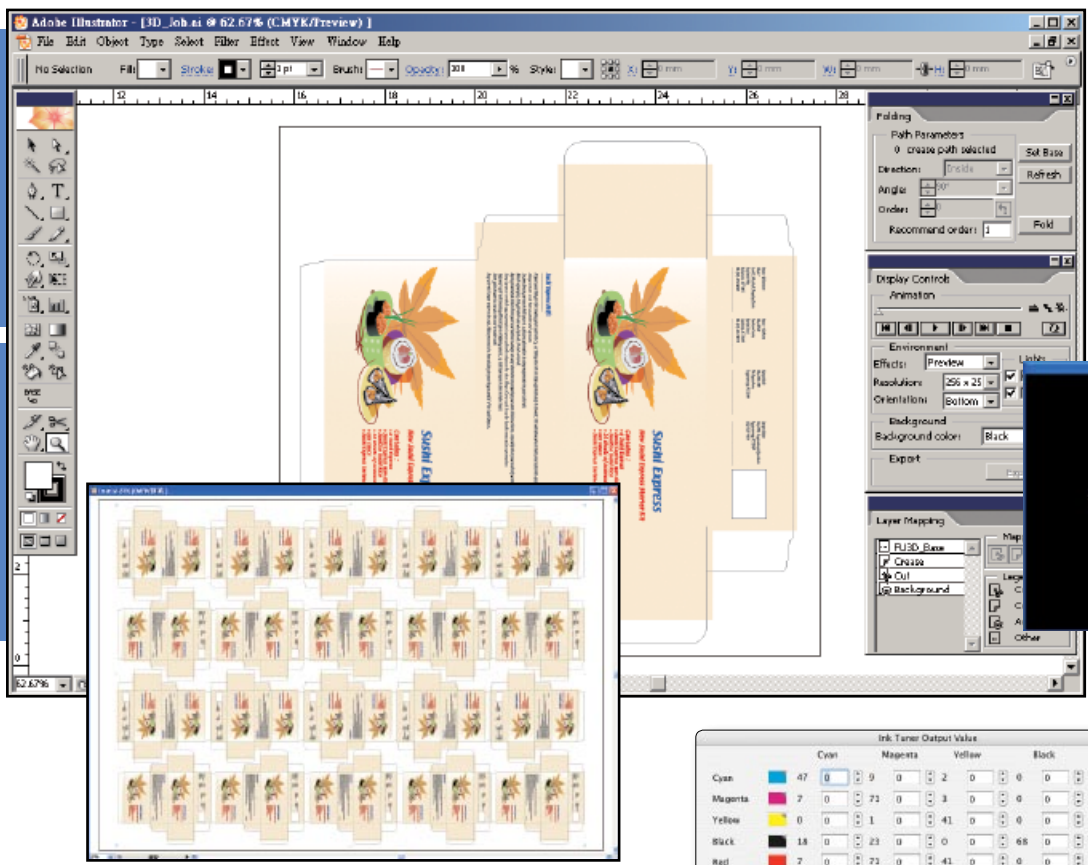


Express Trap i-Tone

Express Trap's new i-Tone feature offers user to improve detail of small image with standard Hybrid Screening, different from normal screening. To provide more control and quality, i-Tone also gives your the ability to specific calibration for many sub levels.

150 LPI loses detail that is maintained using Hybrid Screening on right

BoxProViewer  
BoxProIllustrator



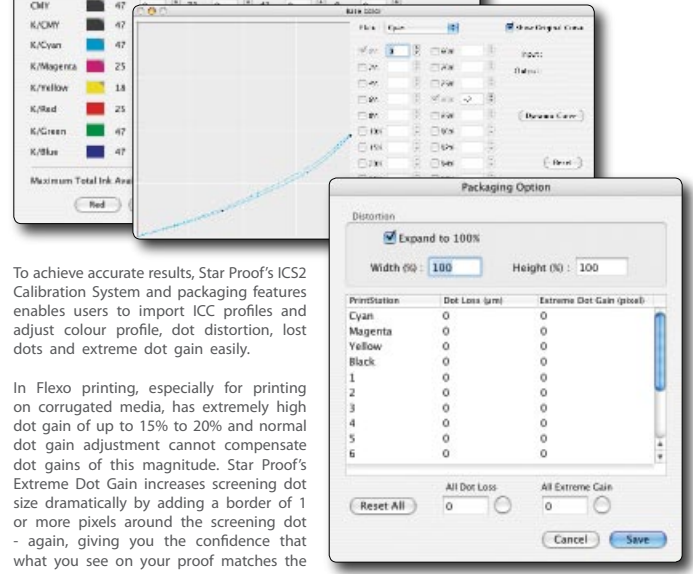
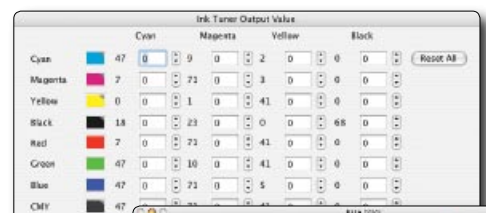
BoxProViewer and BoxProIllustrator works as plug-in in Illustrator

BoxProViewer can also export 3D job image in different resolution as well as 3D job preview in a FREE movie player to their clients for web viewing



### Advanced Box Layout Design Library

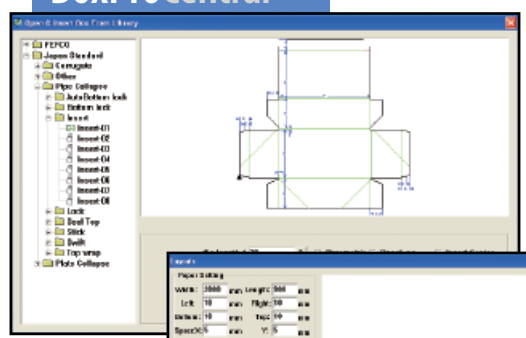
Express FlexoFlow comes with a powerful and easy-to-use box & label design application as standard, it included 3 modules: BoxProCentral, BoxProViewer, and BoxProIllustrator. BoxPro Central is a set of CAD drawing tools to create box layout and structure from initial design, dimensional drawing, overlap, imposition to final process of driving cutting machine. It comes with a library of 400 Box design templates which allows user to use or edit to desired box styles. BoxProViewer and BoxProIllustrator are Adobe Illustrator plug-in that allows user to create 3D modelling and layout imposition for the packaging projects, dimensional mailers, or any other folding paper design. BoxProViewer can also export 3D job image in different resolution as well as 3D job preview in a FREE movie player to their clients for web viewing.



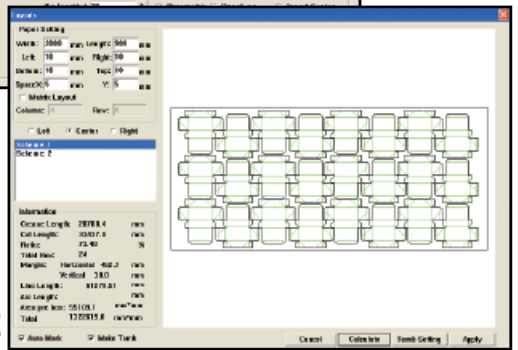
To achieve accurate results, Star Proof's ICS2 Calibration System and packaging features enables users to import ICC profiles and adjust colour profile, dot distortion, lost dots and extreme dot gain easily.

In Flexo printing, especially for printing on corrugated media, has extremely high dot gain of up to 15% to 20% and normal dot gain adjustment cannot compensate dot gains of this magnitude. Star Proof's Extreme Dot Gain increases screening dot size dramatically by adding a border of 1 or more pixels around the screening dot - again, giving you the confidence that what you see on your proof matches the

### BoxProCentral



Select from useful box-data library and modify to you desired box design.



Auto Imposition Scheme Setup

### Ideal Proofing Solutions for Packaging in Flexo Printing

Star Proof offers powerful capabilities to produce top quality screened proofs in its analytical engine, Actual Dot. It analyzes the CMYK dot patterns, screened angles of high resolution separations and reproduces these by creating arrangements of hard dots on the proof. For packaging application, Star Proof provides a set of powerful features that recognise the special dot characteristics to ensure proofs accurately reflect what will be produced on the press. Screening dots prepared for flexo plates are normally adjusted in width or height by a small percentage to compensate for expansion during printing. Distortion expands distorted dots to the original size with user controls to correct the size of the screening dots based on the original distortion ratio or the expansion ratio. It also compensates for the loss of small dots in the transfer to flexo plates during printing. By entering a Dot Lost size, any screening dots smaller than this size will be removed and will not appear on the proof.

## Benefits

### Open System

Express FlexoFlow takes an Open System approach to solve production issues; it offers the possibility for customers to integrate their preferred application, enhance the value of the workflow to give better productivity.

### Automation

What is needed most in any production environment - automation! Compose WorkFlow gives you PDF creation, preflighting, trapping, proofing, job placement, and plate imaging fully automated.

### Easy to configure

Express FlexoFlow's modular design easily adapts to the way you work providing maximum reliability and expandability. Prepress workflows can be setup in seconds with One-click configuration.

### Accessibility

Via internet browser, Express FlexoFlow accesses all the job informations in the database. Submit, monitor and control jobs locally or remotely from any desktop computer.

### High Performance

Built on Compose's powerful Express RIP, the RIP provides advanced screening technology, accepts different file format and high productivity.

### Connectivity

Express FlexoFlow supports over 200 output devices, included drivers for most popular inkjet printers, colour Laser Printer, imagesetters and platesetters.

### Scalable

Express FlexoFlow can scale from one to four RIP engines and still be fully controlled by a single client interface. An open system format allows you to add or replace output devices easily without changing your front-end investment.

### Cost Saving

Express FlexoFlow takes control of the entire prepress production automatically, reducing labour costs. The highly accurate and productive proofing solutions also helps to reduce material cost.

### Quality Improvement

Express FlexoFlow takes advantages on wide range of screening technology to improve printing quality, including Harlequin HPS, Hybrid Screening, ... and more.

### Reliability

Express FlexoFlow is a proven system with customer base well placed in every corner of the world. It has won a lot of praise from customer for its ease of use, productivity, connectivity and flexibility.

## Features

### Input

Using drag-and-drop or remote submission, Express FlexoFlow handles wide range of input formats including PostScript, PDF, EPS, XPS, PCL and 1-bit TIFF... and more with ease.

### Trapping

Express Trap is a powerful trapping application, which provides Express FlexoFlow users with high quality automatic trapping. In addition, interactive zonal trapping also available user to customize variable trapping needs.

### Hybrid Screening

I-Tone is a powerful, fast, yet simple, extra additional component for Express Trap, gives you more capabilities than most RIP's offer.

### RIP

Built on latest Compose RIP engine, Express FlexoFlow offers high levels of performance and productivity to handles today's prepress industry file formats easily.

### Flexo Proofing

Star Proof offers special tools for packaging that allows user to product actual dot proofs with apply different dot gain and dot lost value on different separation to replicate original screening and special dot characteristics in flexo printing, guaranteeing data integrity.

### Job Imposition

BoxProIllustrator and Plate Controller offers user to handle job imposition from AI to PDF and 1-Bit Tiff format automatically or manually with ease.

### Box Layout Preparation

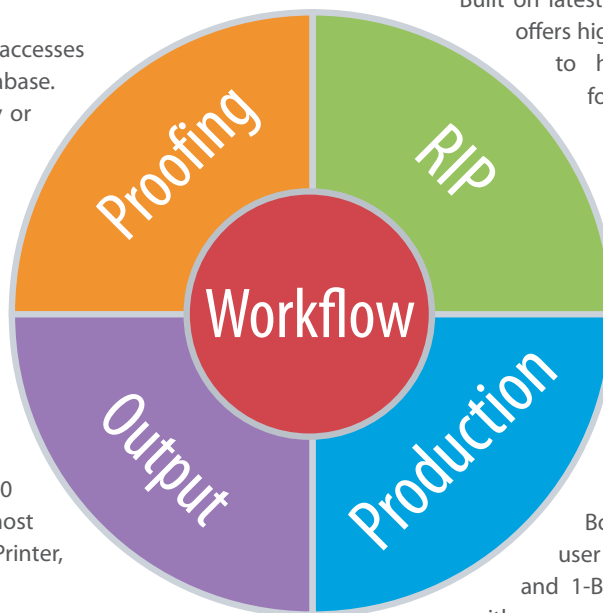
BoxProCentral is a set of CAD drawing tools to create box layout and structure from initial design, dimensional drawing, overlap, imposition to final process of driving cutting machine. It comes with a library of 400 Box design templates which allows user to use or edit to desired box styles

### 3D Preview

BoxProViewer is an Illustrator plug-in that allows user to create 3D modelling for the packaging projects, dimensional mailers, or any other folding paper design. It can also export 3D job image in different resolution as well as 3D job preview in a FREE movie player to their clients for web viewing.

### Job management

Client/Server architecture allows both staff and clients to track and monitor production of jobs in the system anytime, anywhere. Jobs can be submitted locally or remotely from any desktop computer. View current workflows from a browser window and can gain direct access. Your clients can view composite PDF files for soft proofing and approve their jobs quickly and efficiently.



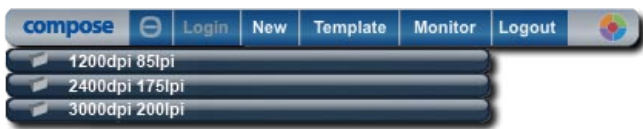
# Express FlexoFlow handles all your input and print requirements

## Processing jobs in a wide range of formats

Express FlexoFlow handles most popular input formats – including PostScript, PDF, EPS, PCL and 1-bit TIFF. Using drag-and-drop or save, jobs are directed to hot folders which are continuously monitored. Jobs can also be submitted using the Web Browser. The Spool folder takes single file jobs and the Composer Module manages the delivery of jobs with multiple PostScript or PDF files into the workflow.

## Job Submission from your Desktop

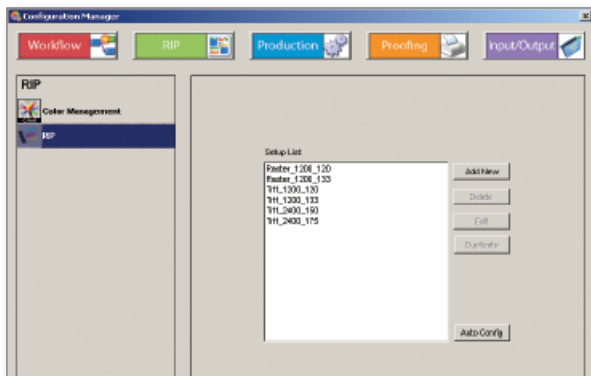
Job Submission is made easier than ever with the Compose Job Submission widget, which sits right on your desktop. Drags a file to a template, enter the job ID and job name, then press Submit and the job files will be sent directly to the workflow.



Job Submission Widget

## Easy Configuration

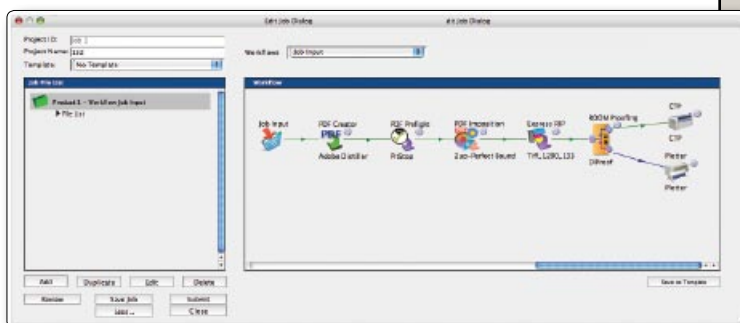
Express FlexoFlow allows you to pre-define all your settings so you can select them from the remote Job Submission application. You can create new setups even when Express FlexoFlow is processing other jobs. And with one click of the button, you can import all your RIP settings without having to create new setups.



## Remote management - anytime, anywhere

Express FlexoFlow's database holds all job information in the system – so you can submit, monitor and control jobs locally or remotely from any computer. You can get a complete picture of current workflows in the browser window and by clicking on any point of the process you can gain direct access to the local job manager – providing exactly the same controls as in Express FlexoFlow.

Easy to use job submission software for both Mac OS X and Windows PC, allowing users to select job files and select RIP, job placement, proofing, plus other settings remotely from their



## Support for over 200 output devices

Compose has over fifteen years experience in digital colour and imagesetting, designing interfaces for inkjet plotters, laser printers, imagesetters and platesetters. We have fine-tuned our drivers for many output devices, ensuring maximum productivity and quality in your prepress system.

## Flexible delivery of soft proofs to your clients

By adding the Internet module to your workflow, you can set up automated production of composite PDF files for soft proofing so your clients can approve their jobs quickly and efficiently ... even down to the checking of actual dots! Express FlexoFlow gives you the facilities to deliver PDF files for client approval via e-mail or FTP.

## Remote printing options to let you run proofs anywhere

With Express FlexoFlow you can use the internet to deliver jobs to wherever they need to be printed - to your customers or to their remote site. The Compose Express RIP can be set to generate raster PDFs which are then uploaded to a FTP site for download to the target location for production of colour accurate proofs – saving delivery costs and shortening the approval cycle.

## Controlling output – locally and over the internet

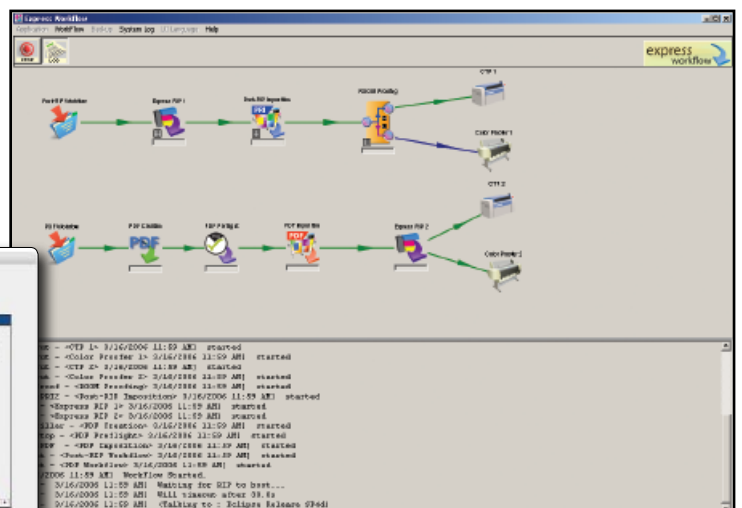
Raster PrintStation gives you full ability to control and monitor jobs in the output queue. Taking rastered data in 1-bit TIFF, NetFlow Raster or Harlequin PGB format from the workflow, Raster PrintStation provides you to set up your output device, preview, hold and release queues, redirect jobs and reorder jobs in the output queue either locally or remotely through a standard internet browser. Additional functions for cropping, tiling and step-and-repeat are also provided.

## Load Balancing for Maximum Productivity




















Remote Load Balance module to load balance job files to multiple modules, such as the RIP or DI Proof module, speeding the throughput while keeping the full utilization of all modules.

## Distributed Processing

Express FlexoFlow Remote Service for distributing the processing tasks to a number of computers to reduce the overall processing time. For example, if the RIP is the bottle-neck of your workflow production system, you can simply add the Express FlexoFlow Remote Service with an additional Express RIP and the workflow will distribute the ripping process to the two RIPs.



Much Simplified Express FlexoFlow Workspace

OUTPUT		Distribute Jobs	Distribute input files to various connected modules based on filename rules.
		Output Load Balance	Connect to Output modules and send raster files to connected modules in round-robin fashion for load-balancing output devices.
		Remote Load Balance	For load-balancing multiple modules running on remote computers such as AutoPRI, Express RIP, or DI Proof, etc..
		CIP3	Generate CIP3 output files from PostScript or PDF input files. Require Harlequin CIP3 output plug-in.
		Output	Send ripped files to Raster PrintStation 2 software or third-party TIFF Downloaders
Production		TIFF-IT Output	Generate TIFF-IT/P1 output files from PostScript or PDF input files. Require Harlequin TIFF-IT/P1 output plug-in.
		Plate Controller	Flatworking software supporting double-sided sheets for post-RIP 1-bit or PDF (Optional) files. Automatic front and back plate alignment makes it easy to align jobs on front and back sheet. Provides flexible features such as step-and-repeat and double-burn. Graphical user interface is intuitive and easy to use.
		Express Trap / i-Tone	High-end trapping software available in automated as well as interactive versions. The automated version allows trapping of the entire job with the same set of high-end trapping parameters, while the interactive version allows different trapping parameters for different zones in the job pages. Enhanced i-Tone provides hybrid screening on defined area.
		BoxProCentral	A CAD drawing tools comes with a library of 400 Box design templates. It can create box layout and structure from initial design, dimensional drawing, overlap, imposition to final process of driving cutting machine.
		BoxProViewer	An Adobe Illustrator plug-in for creating 3D job image and 3D job preview.
BoxProIllustrator		An Adobe Illustrator plug-in for creating layout imposition.	
Proofing		Input / Composer / Raster Import	Support PostScript, Encapsulated PostScript, PDF and TIFF files. It can also automatically group files into jobs based on filename rule.
		Jaws Creator	Distill PostScript or Encapsulated PostScript files to PDFs using the Global Graphics Jaws engine.
		PitStop Server	Pre-flight and certify PDF files with pre-defined profiles and action list using the industry standard Pitstop Server.
		Plate Selector	Select action for plates based on input plate sizes. For example, larger plates may need CIP3 data generated, but smaller plates need only be sent to Output module for output to plate.
		Visual Proof	High quality remote soft-proofing software for 1-bit TIFFs, Harlequin Page Buffers and NetFlow Raster. Preview is provided at 11 sizes locally as well as remotely. Flexible tools provided to measure frequencies, reverse dot gain, delete extra separations, or merge separations, mirrored and rotated preview, colour manager for specifying preview colour, as well as preview front and back surfaces together.
RIP		Internet	Generate ripped contone data for easy soft-proofing.
		PDF Preview	Soft-proofing module for previewing pre-separated and composite PDF files in composite colour.
		Star Proof	Contract quality 1-bit dot-proofing software with ICC and density calibration tool, provides special features for packaging applications that recognise the special dot characteristic of flexo printing to ensure proofs accurately.
		Windows Printer	Simple proofing solution for standard windows printer.
		Express RIP	Accurate high-speed ripping via the Compose Express or Harlequin RIP version 5.5 or above.

## System requirements

### Recommended:

CPU: Dual Xeon 3.0GHz  
Memory: 2GB RAM  
Hard Drive: 80GB SATAII Hard Disk

### Recommended operating system:

Microsoft Windows 2003 Server



Copyright 2008 Compose. All rights reserved.  
Compose logo is the trademark of Compose System Limited and its subsidiaries.  
All other brands and product names are trademarks or registered trademarks of their respective owners.  
All specifications and price changes are subject to change without notice.  
Compose cannot accept liability for any loss or damage arising from the use of information or particulars in this document.