

Express NewsFlow, a digital workflow solution designed for newspaper printing production. Designed to continuously incorporate new features, NewsFlow allows the user to keep pace with the ever-changing needs of today's demanding print industry. Its modular based architecture makes NewsFlow easy to configure and customize production specific workflows. NewsFlow provides tools to automate and streamline your production process such as publication planning, intelligent page pairing and automated imposition eliminating unnecessary wait time, ensuring a smoother more efficient workflow.



## Workflow Family

A seamless approach to  
prepress workflow

## Express NewsFlow

### Modular design adapting to your work

Express NewsFlow is a modular solution designed to give you maximum reliability and scalability for newspaper production. Express NewsFlow feature rich modules, provide various levels of automation. The intuitive graphical interface simplifies selection of modules and designing workflows to suit for production environment. Multiple workflows are supported, enabling two or more paper to run simultaneously. Choose complete system automation or control a publication manually. It built on Compose's Express RIP, which ensures fast, PostScript Level 3 ripping for 1-bit Tiff output to your system. Proofing options allow for RIP once output many, which ensures file integrity before final imaging to film or plate.

### Publication Planner

Publication Planner allows the user to plan a publication of any complexity and size, from a single page to a multi-page publication. Using a hierarchical structure the user can define custom parameters for a specific publication. This allows for flexible definition of publication contents using multiple sections and sub-sections within a publication plan.

### Publication Imposition

Intelligent Imposition tools allow the user to easily create 2, 4 and 8-up impositions. Users can quickly build impositions that include all plate furniture such as custom marks and colour bars. NewsFlow fully supports PDF file versions up to 1.7 and allows user to create multiple imposed PDF impositions within a single section. Each imposition configuration can be instantly previewed to show page positioning on front and backs plates.

### Publication Monitor

Intelligent page pairing feature automates the process of imposing pages. The Publication Monitor analyses incoming PDF files for the correct file name code, it then matches the page codes to the layout. Pages are automatically placed in the correct position; then Publication Monitor automatically generates imposed PDF files ready for imaging to film or plate. The colour-coded layouts on the monitor then change colour to notify users that section is completed in high-res separations or as a low-res composite contone for soft-proofing.

**compose**

An Open Future

[www.compose.com.hk](http://www.compose.com.hk) [www.compose.co.uk](http://www.compose.co.uk) [www.composeusa.com](http://www.composeusa.com)



# Features Highlight

## Express Workflow 3 Compatible

Express NewsFlow is now running on the proven Express Workflow 3 platform. Users can now use the Job Courier to submit newspaper pages and specify processing instructions from a remote PC or Mac computer.

## Remote Production Monitor

The newly designed NewsFlow Production Monitor now runs remotely on Web Browser. All popular browsers such as Internet Explorer, Firefox and Safari are supported on both Macs and PCs. Users can view the most updated status, including the production plan, input pages, and output signatures, without having to go over to the workflow production machine. Users can also retrieve and view the original input pages and check that the page is done correctly.

## Production Log

Express NewsFlow now provides a detailed log of all operations and events that has occurred on a publication, including page in, signature print out, signature reprint, page replacement, publication plan changes and workflow start/stop. From these records, the production manager can compile useful statistics for streamlining their future production operations.

## New InksScript Optimizer Colour Optimisation Tool

Express NewsFlow has now integrated the InksScript Optimizer application, allowing users to standardize their RGB or CMYK files, improving the printability, and reduce ink coverage while maintaining the original colour and quality for images and for newspaper page PDFs.

## New InksScript Tool

Express NewsFlow has now integrated the Compose InksScript module, providing ink key information in either CIP3 or JDF format, or by providing the ink key charts in PDF file or windows printer output. This helps to reduce press setup time and improves the consistency over the print runs.

## Open System

Express NewsFlow takes an open System approach to solve production issues; it offers the possibility for customers to integrate their preferred application, enhance the value of the workflow to give better productivity. It doesn't have to be a Compose product, bring it to Compose, we will offer the means to integrate them together.

## Automation

What is needed most in production environment - automation! Compose WorkFlow gives you PDF creation, preflighting, trapping, proofing, imposition, and plate imaging fully automated under one roof.

## Publication Imposition

- Full support of PDF file version from 1.3 up to 1.6
- Full support of single-separation, pre-separated, and single-page composite, or multiple-page composite PDFs.
- 2-up and 4-up page imposition
- Nested imposition for multiple impositions within a single section
- Easy to use imposition configuration with instant preview.
- Support centre and split spread
- Support single or multiple half-web, or three-quarter-web rolls, with user-defined positioning of rolls
- Support different image positioning on front and back plate
- Top, left, bottom, right and centre alignment of publication pages based on media

## Publication Planner

- Structural definition of publication with customizable parameters and hierarchy.
- Publication issues defined either by date or volume numbers.
- Flexible definition of publication contents using sections and sub-sections.
- Definition of colour schemes for individual sheets.
- Input filename rules for classification of input files based on section, sub-section codes, dates, page ranges, and edition codes.
- Output filename rules for easy identification of output files based on Publication Name,, Section Name, Section Code, Issue Name, Run Number, Sheet Number, Sheet Surface, Tile Code, Page Number, and Edition Number.
- Separate output targets for monochrome and colour pages.

## Publication Monitor

- Local as well as Remote Browser-based monitor.
- Preview of pages or imposed sheets in Acrobat Reader
- Instant re-print of selected imposed sheets
- Drag and Drop page replacement
- Thumbnail for pages after entry to the system, shown in correct orientation and proportion according to impositions scheme
- User-defined background colour showing progress information for individual sheets such as queuing to be imposed, imposing, imposed, or error during imposition.
- User-defined background colour for sections
- Icons showing colour format of pages on plates.
- Archive processed files



# Express NewsFlow

Publication Production System

Powerful Newspaper Production System  
with Flexible Workflow Configuration

# Express NewsFlow Modules

## Workflow Family



### Distribute Jobs

Distribute input files to various connected modules based on filename rules.



### Express NewsFlow Remote Service

For running Express NewsFlow modules such as DI Proof, AutoPRI 2, Express RIP etc. on remote computers. Connect to Express NewsFlow via TCP/IP network.



### Output Load Balance

Connect to multiple Output module and send raster files to connected modules in round-robin fashion for load-balancing output devices.



### Remote Load Balance

For load-balancing multiple modules running on remote computers such as AutoPRI, Express RIP, or DI Proof, etc..

## Output Family



### CIP3

Generate CIP3 output files from PostScript or PDF input files. Require Harlequin CIP3 output plug-in.



### ECRM

An output module created specially for ECRM output devices.



### Escher Grad

An output module created specially for Escher Grad output devices.



### Highwater

An output module created specially for Highwater devices.



### Output

Send ripped files to Raster PrintStation 2 software or third-party TIFF Downloaders



### Presstek

An output module created specially for Presstek devices. Generate Presstek raster and thumbnail files.



### TIFF-IT Output

Generate TIFF-IT/P1 output files from PostScript or PDF input files. Require Harlequin TIFF-IT/P1 output plug-in.

## Production Family

### Adobe Distiller

Distill PostScript or Encapsulated PostScript files to PDFs. Support Distiller 6 to 7.



### Back2Back

Double-up jobs for duplex proofing. Correct the horizontal and vertical alignment, match the front and back surfaces.



### Composer

Support PostScript, EPS, PDF and TIFF files. User can manually group files together into jobs.



### Express Trap

High-end trapping software available in automatic as well as interactive versions. The automatic version allows trapping of the entire job with the same set of high-end trapping parameters, while the interactive version allows different trapping parameters for different zones in the job.



### EWf Script

Support 3rd-party generic folder-based applications. Input files are deposited in a selected input folder. Generic application processes the files and deposit the output files to an output folder, which is then picked up by again and moved on to the next module.



### Input

Support PostScript, EPS, PDF and TIFF files. It can also automatically group files into jobs based on filename rule.



### Jaws Creator

Distill PostScript or Encapsulated PostScript files to PDFs using the Global Graphics Jaws engine.



### Media Saving

Rotation of jobs based on user requirements to fit on output plates.



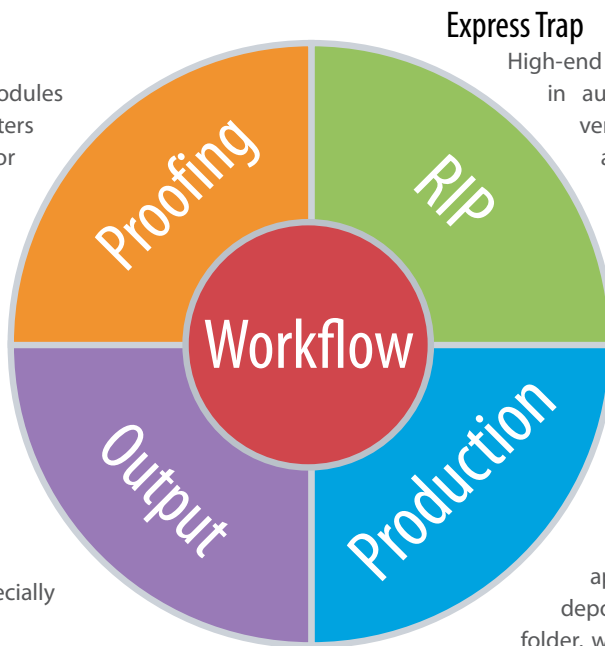
### Page Combine

Combine multiple separation PDFs into pre-separated PDFs.



### Page Splitter

Split multiple-page PDFs to single-page PDFs based on page ranges specified in filename rule. If no rule is provided, will split into single pages starting from page number 1.





## PitStop Server

Pre-flight and certify PDF files with pre-defined profiles and action list using the industry standard Pitstop Server.



## Plate Selector

Select action for plates based on input plate sizes. For example, larger plates may need CIP3 data generated, but smaller plates need only be sent to Output module for output to plate.



## Raster Import

Support pre-separated and RIP-separated 1-bit files such as 1-bit TIFF, Harlequin Page Buffers and NetFlow Raster. User can freely convert from one format to the other. In addition, an additional function to generate Harlequin Page Feature allows users to easily divert Harlequin Page Buffer files to a specific output folder.



## Web Growth

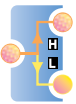
Generate web-growth compensated raster files for your web presses. Compensation can be applied in either horizontal or vertical direction. Support up to 16 separations.

## Proofing Family



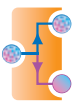
### CMM

ColorPro enabled Express RIP or Harlequin RIP provides accurate high-speed proofing for your PostScript and PDF files.



### Content Proof

Fast, entry-level 1-bit proofing module for generation of PDF files, proofing to Windows Printer, or outputting to large format inkjet plotters. Colour management is also provided using Windows CMM software.



### DI Proof

High quality 1-bit proofing module for generation of PDF files, proofing to Windows Printer, or outputting to large format inkjet plotters. Colour management is also provided using Windows CMM software.



### Visual Proof

High quality remote soft-proofing software for 1-bit TIFFs, Harlequin Page Buffers and Netflow Raster. Preview is provided at 11 sizes from 0.78% to 800% locally as well as remotely. Flexible tools provided to measure frequencies, reverse dot gain, delete extra separations, or merge separations into a single plate, mirrored and rotated preview, colour manager for specifying accurate preview colour, as well as preview more front and back surfaces together.



### Internet

Generate ripped contone data for easy soft-proofing.



### PDF Preview

Soft-proofing module for previewing pre-separated and composite PDF files in composite colour.

## Star Proof

Contract quality 1-bit dot-proofing software with unique colour calibration tool which offers the best proofing solution in the market today.



## Windows Printer

Simple proofing solution for standard windows printer.



## RIP Family

### Express RIP

Accurate high-speed ripping via the Compose Express or Harlequin RIP version 5.5 or above.



## Pressroom Family

### Express InkScript **New!**

An ink key presetting module which read 1-bit tiff file from RIPs, analyzes and generates CIP3 files for the ink control unit. It can also export the calculated ink density value in PDF file or print out on Laser printers for users to base on the hard copy to preset their presses. Advanced IS Connect and IS Connect Loop options are also provided to integrate with press console.



### InkScript Optimizer **New!**

InkScript Optimizer is a Preflight, Standardization and Optimization software for four color separation files. It allows producing documents for problem-free printing. It can control and improve the printability of files containing four color separations by optimizing the separation according to the actual process/press/paper.

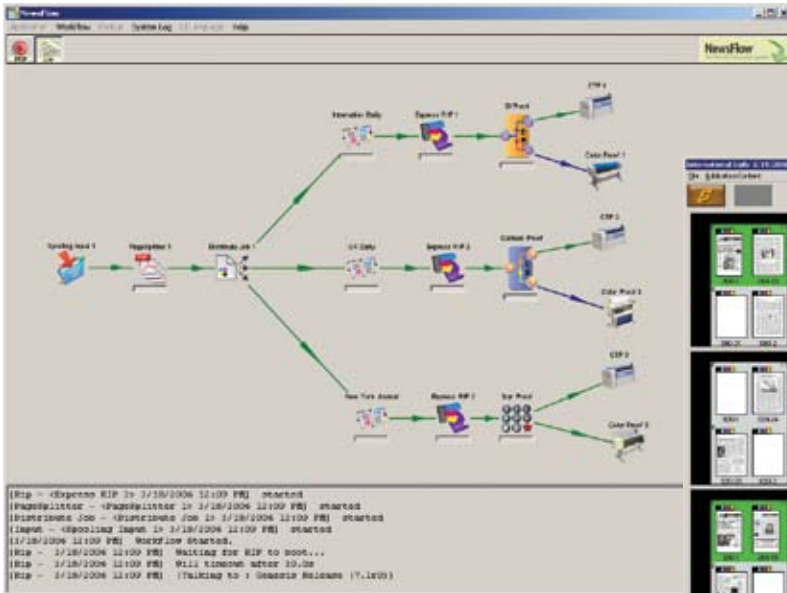


## Controlling output with Raster PrintStation – locally and over the internet

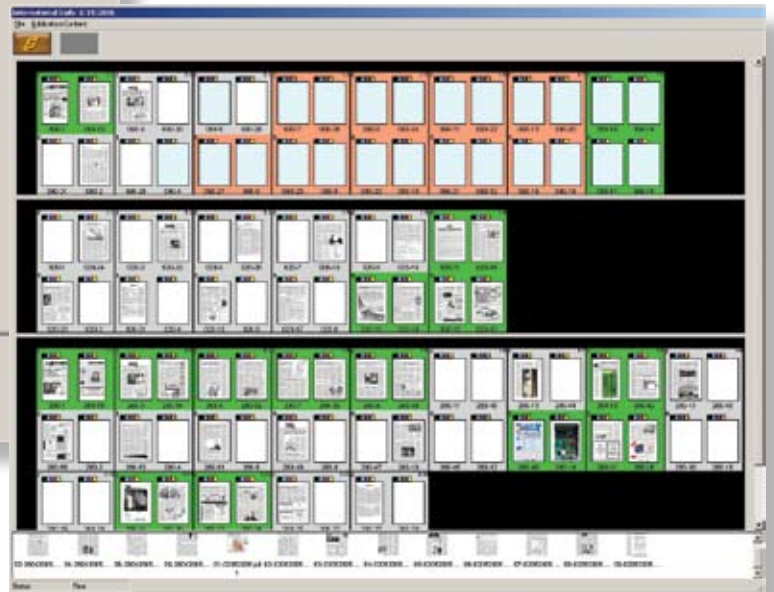
Raster PrintStation gives you full ability to control and monitor jobs in the output queue. Taking rastered data in TIFF, NetFlow Raster or Harlequin PGB format from the workflow, Raster PrintStation provides you with facilities to set up your output device and lets you preview, hold and release queues, redirect jobs and reorder jobs in the output queue either locally or remotely through a standard internet browser. Additional functions for cropping, tiling and step-and-repeat are also provided.

### Support for over 200 output devices

Compose has over fifteen years experience in digital colour and imagesetting, designing interfaces for inkjet plotters, laser printers and copiers, imagesetters and platesetters. Through close technical co-operations with many vendors, we have fine-tuned Express RIP drivers for many different output devices. We have established a strong customer base with over 12,000 Express RIP installations worldwide. We offer a comprehensive range of drivers for all popular printers, imagesetters and platesetters – ensuring maximum productivity and quality in your prepress system.



Express NewsFlow allows users to easily create workflows for printing multiple newspapers.



## Express NewsFlow Highlights

Express NewsFlow handles all your input, PDF processing, newspaper imposition, production monitoring, proofing and print requirements all in one program.

### Processing jobs in a wide range of formats

Express NewsFlow handles input data in all popular formats – including PostScript, PDF, EPS, PCL and 1-bit TIFF. Using drag-and-drop or remote submission, jobs are directed to hot folders which are continuously monitored. Jobs can also be submitted using the Web Application. The Spool folder takes single file jobs and the Composer Module manages the delivery of jobs with multiple PostScript or PDF files into the workflow.

### Powerful PDF processing

Express NewsFlow provides powerful tools for processing your newspaper PDF pages. Separations in PDF files can be recombined into pre-separated PDF pages. Multiple-page PDF files can be split into individual pages based on multiple page ranges specified in the PDF file names. Pre-separated PDF files can be previewed in composite, with additional function to mirror only the yellow separation.

### Newspaper Imposition

Express NewsFlow provides flexible and easy to configure 2-up, 4-up and 8-up imposition. Half-web and quarter-web rolls are also fully supported. User can select the press units with the half- or quarter-web rolls, as well as the placement position on the press units. In addition, user can place marks and colorbars on specific locations separately on front and back surface.

### Production Monitoring

Express NewsFlow provides a graphical user interface for viewing the progress of page input and imposition. With bold colours for different sections and status and thumbnail for pages which have entered the system, the production manager can view at-a-glance the current status of newspaper production.

### Proofing

Express NewsFlow provides a wide-range of proofing solutions to suit your every needs, including both advanced ICC colour management for PDF proofing, or 1-bit ROOM proofing. For quick layout proofs, users can downsample via the Content Proof module to generate low resolution PDF files for soft-proofing or for printing on large format proofers. For actual-dot proofs for your advertising clients, users can pass the ripped files to Star Proof to generate contract-quality actual-dot proofs on your large format colour proofers.

### Web Growth Compensation

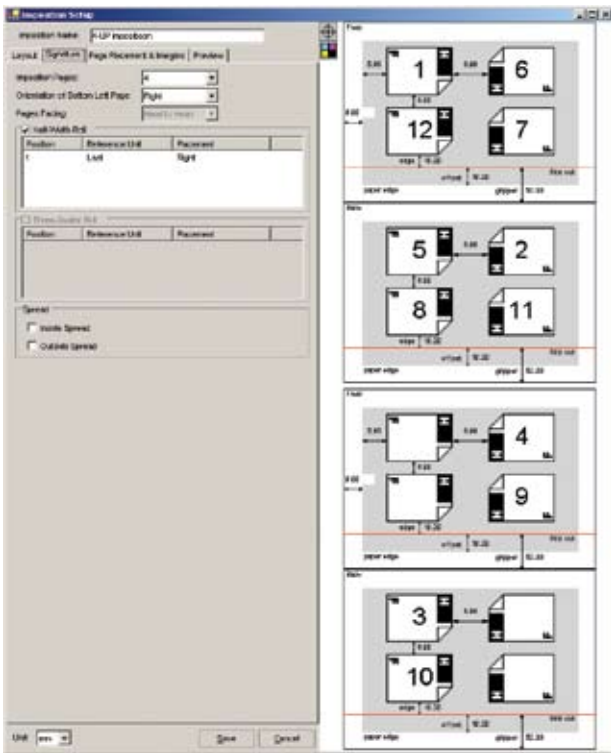
Express NewsFlow provides web growth compensation for your web presses. Individual separations can be rendered in different horizontal and vertical scales.

### Support for over 200 output devices

Compose has over fifteen years experience in digital colour and image-setting, designing interfaces between our RIPs and inkjet plotters, laser printers and copiers, imagesetters and platesetters. Through close technical co-operations with many vendors, we have fine-tuned Express RIP drivers for many different output devices helping us establish a strong customer base with over 12,000 Express RIP installations worldwide. We now offer individually designed drivers for all popular printers, imagesetters and platesetters – ensuring maximum productivity and quality in your prepress system.

### Browser based management and tracking - anytime, anywhere

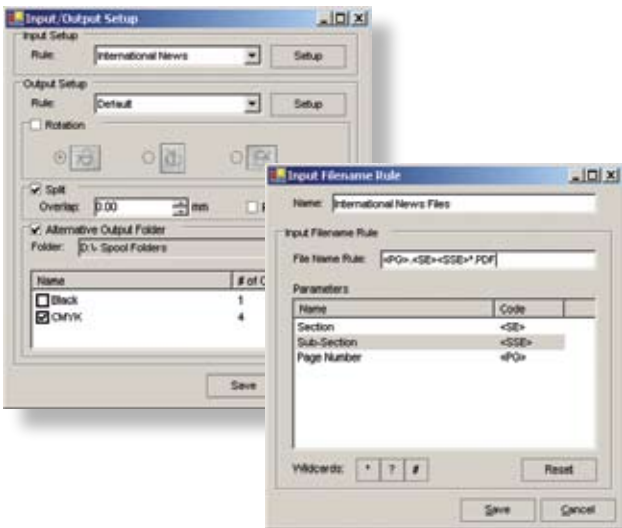
Accessible through an internet browser, Express NewsFlow's database holds information about all jobs in the system – so you can submit, monitor and control jobs locally or remotely from any desktop computer.



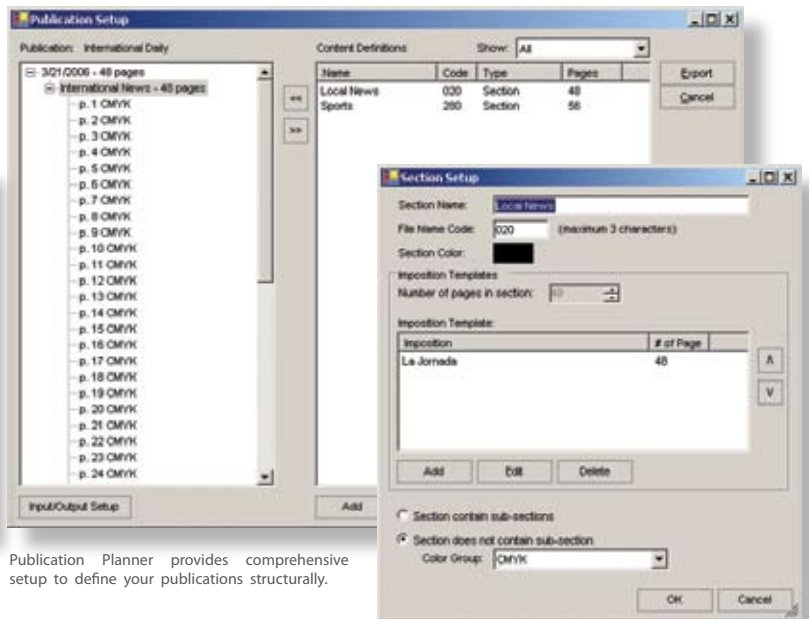
Easy-to-configure imposition setup with support for half- and quarter-web rolls



Preview before print in full size or reduced size.



Precise controls to manage your input and output files.



Publication Planner provides comprehensive setup to define your publications structurally.

## Operating System Support

### Basic requirement:

- CPU: Pentium IV 2.8GHz
- Memory: 1GB RAM
- Hard Drive: 80GB Ultra320 SCSI Disk

### Recommended:

- CPU: Dual Xeon 2.8GHz
- Memory: 2GB RAM
- Hard Drive: 80GB Ultra320 SCSI Disk

### Recommended operating system:

- Microsoft Windows 2000 Professional or Server
- Microsoft Windows 2003



Copyright 2007-2008 Compose. All rights reserved.  
 Compose logo is the trademark of Compose System Limited and its subsidiaries.  
 All other brands and product names are trademarks or registered trademarks of their respective owners.  
 All specifications and price changes are subject to change without notice.  
 Compose cannot accept liability for any loss or damage arising from the use of information or particulars in this document.