

Express Trap is a powerful raster-based trapping solution complementary to the Harlequin RIPs, it provides flexible and accurate, automatic and interactive in-RIP trapping. Express Trap's interactive trapping features make it a powerful and full-featured trapping solution. The easy-to-use interface allows users to create special trap zones with custom trapping parameters to ensure complex print jobs are trapped correctly. Users can "Trap-On-Fly" and view the results instantly.



## Production Family

Designed to streamline  
prepress production

### Express Trap

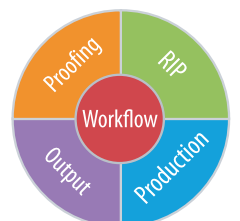
#### Highlights

- Raster-Based
- Traps PS, PDF & EPS jobs
- Trap Once, output many formats
  - Miter trapping
- Special Image trapping
  - Spot Color Support
  - Trap Color Reduction
- Special Black Handling
  - Trap On Fly preview
  - Ink Remapping tool
- Graphical Configuration Tool
- User Trapping parameter sets
- Client-Server model on PC & Mac

**compose**

An Open Future

[www.compose.com.hk](http://www.compose.com.hk) [www.compose.co.uk](http://www.compose.co.uk) [www.composeusa.com](http://www.composeusa.com)



## Various Trapping Options

### Zone Trapping

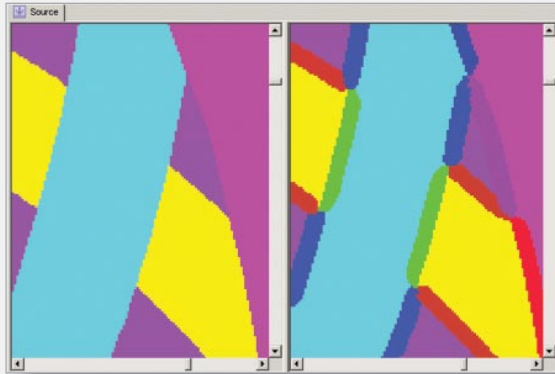
Trap zones may be created using various existing tools for generating trap zones in different desktop page layout and viewing applications such as Adobe Acrobat.



Express Trap Zone tool allows to create overlapping rectangle zones, edit them and set different trapping parameters in zones. Polygonal and elliptical zone shapes will be offered in a future release.

### Mitre Trapping

Miter trapping is the art of detecting the various corner conditions and adjusting the shape of the trap brush to produce better corner results.



Miter trapping turned on - the brush shape tapers down at the corners to produce the best shape.

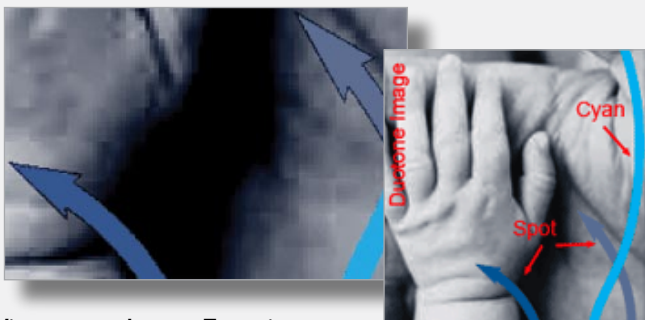


### Image Trapping

Image trapping is one of the most important features of Express Trap. The ability to properly trap image data is one of the features that define high-end high quality trapping. Express Trap provides an extensive set of tools for image trapping providing the needed support for just about any type of

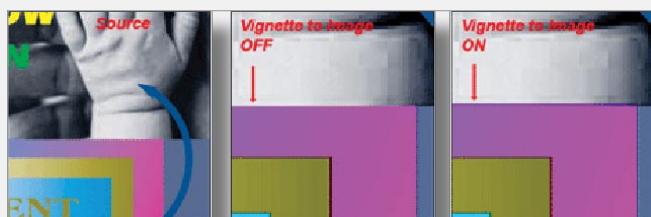
### Spot to Image Special Case

Spot colours can be set as a special case to selectively trap image to spot colours while not trapping images to process colours.



### Vignette to Image Trapping

As artwork increases in complexity and new transparency options are used, Express Trap has developed a sophisticated mechanism to handle trapping of images to vignettes.



## Express Trap, the Premier Workflow Tool for High Quality Automatic and Interactive Trapping is NOW Available!

## Features and Benefits

### Intelligent Trapping

Page layout application controls for setting trapping parameters such as trap zones. Using standard tools such as plug-ins for Acrobat PageMaker and InDesign or extensions for Quark, the Express Trap reads and applies settings from within the RIP environment and translates these settings intelligently into trapping parameters.

### Trap-On-Fly Preview

Powerful Trap-On-Fly option allows previewing trap settings in the current zoom window instantly.

### Ink Remapping & Overprint Tool

The Ink Remapping and Overprint Tool lets you control both the number of separations and how those inks overprint! Combine spot colours into one, convert to process, or rename them. Control the order that inks will output.

### Trapping Parameters Adjustment Tools

Flexible trapping adjustment tools to change trapping parameters on a page or page zone basis for single-page or multi-page jobs.

### Separate Trap Colour Reduction Controls

Trap colour is the result of combining colours to create a trap, and trap colour reduction is the result of reducing the value of trap colours to lower the overall darkness of these combined colours.

### Intelligent Brush

Automatic adjustments of corner width when creating complicated trap shapes.

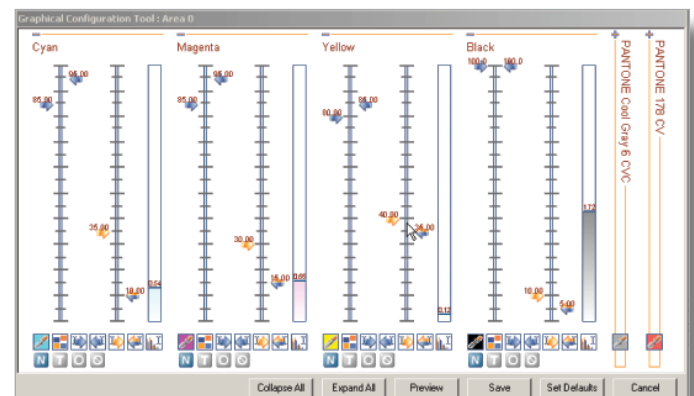
### Easy Setup Tools

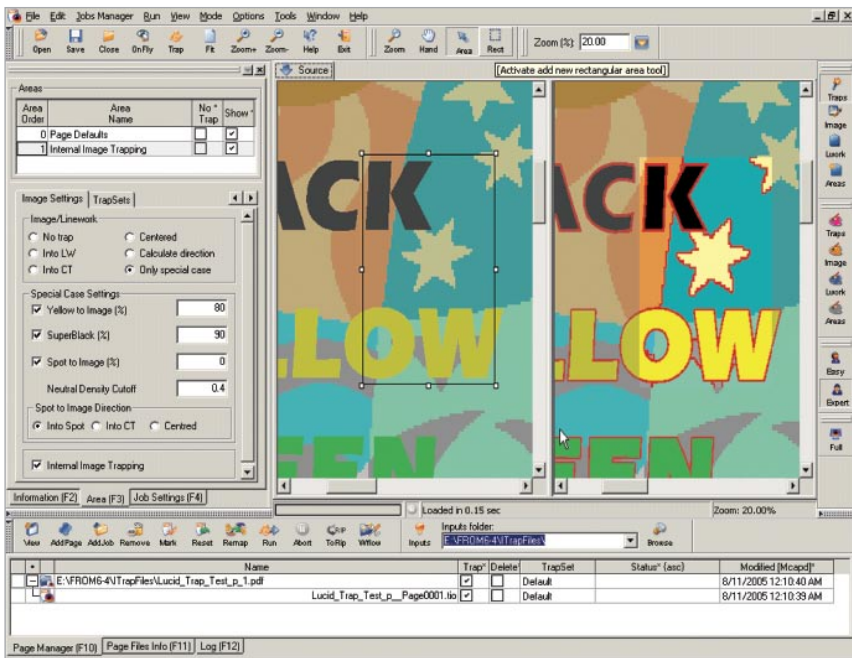
Easy to configure trapping queues in the Harlequin RIP / Express RIP using special setting tools.

### Graphical Configuration Tool

Graphical Configuration tool allows editing of ink-based trapping parameters.

Graphical Configuration tool allows editing of ink-based trapping parameters





**Express Trap Viewer - Main Screen**

## Express Trap Viewer

Express Trap Viewer allows you to open the source page data, select a part of the page and apply trapping "on-the-fly" to immediately view the results. This could be repeated with modified trapping parameters until the desired results are achieved. Then the trapped page can be saved to disk for output or further processing. The original data is not overwritten; so its integrity is maintained. Trap On Fly is a powerful option of the Viewer that helps you see and adjust trapped results without printing the proofs.

## Enhanced Hybrid Screening Technology

Hybrid Screening is a solution to the "highlight break" of flexographic printing. The excessive highlight gain and minimum dot "requirements" - caused by the nature of small dots on flexo plates to "squash" and become bigger - have long been considered an insurmountable obstacle in the path of high-quality flexographic printing. Hybrid Screening combines the best of traditional screening and stochastic by creating a smooth transition between stochastic highlight dots and conventional screening through the rest of the print range. You can now print highlights which truly fade to zero, and have precise control over subtle pastels and shadings previously nearly impossible to achieve in print production.

### Hybrid on left vs regular 150 on right



## Optional Plug-ins

### • I-Tone

The screening plug-in for Express Trap, it outputs screened 1 bit TIFF files directly from Express Trap. I-Tone uses configurable screening and currently ships with Hybrid Screening based on these.

### • I-PDF

The plug-in to add a traps layer to existing PDF files. Send un-trapped PDF files in and get the same PDF file back with trapping applied.

### • I-PDFxM

I-PDFxM - this plug-in creates a "raster based" PDF/x format file that has lineart at high resolution and images at a lower resolution. I-PDFxM allows you to control the resolution of both the LW and CT layer.

### • I-JPEG

The "Soft Proofing" plug-in that can produce an excellent quality soft proof file in either, browser compatible RGB, or CMYK JPEG format - at any resolution!

### • I-Delta

This plug-in outputs a job into the Heidelberg Delta format allowing Delta users to integrate the latest Harlequin Rip into their existing Delta workflow.

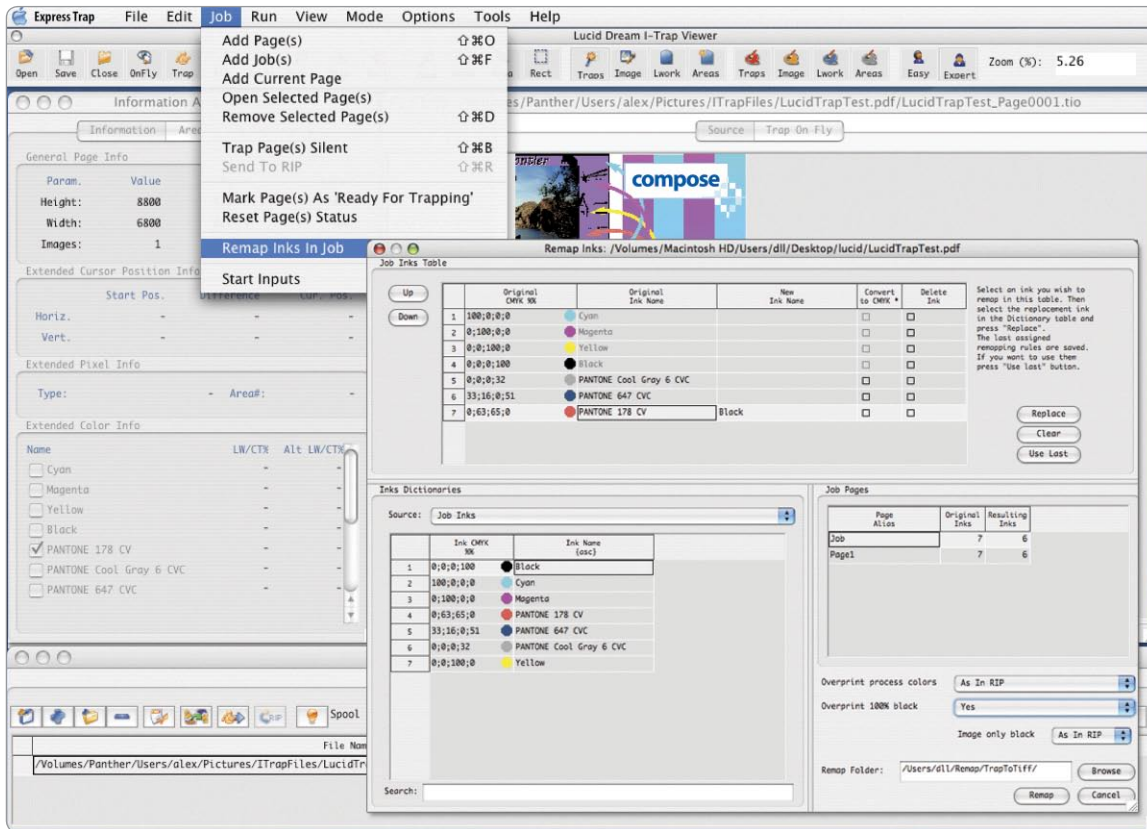


### Express Trap / I-Tone

New I-Tone feature offers user to improve detail of small image with Hybrid Screening, different from normal screening. To provide more control and quality, I-Tone also gives your the ability to specific calibration for many sub levels.



**150 lpi loses detail that is maintained using Hybrid Screening on right**



### Ink Remapping and Overprint Tool

The Ink Remapping and Overprint Tool lets you control both the number of separations and how those inks overprint! Combine spot colours into one, convert to process, or rename them. Control the order that inks will output.

## 2 Versions Available

### 1. Express Trap - Interactive

A full client-server version of the Express Trap. It allows unlimited clients to prepare files for final trapping by a central licensed server. Clients and Server can run on both Mac or PC. Remote clients can view jobs, apply ink remapping and handle all trap settings.

### 2. Express Trap - Auto

A basic version of Express Trap that supports automatic trapping and ink remapping functions. In addition, this version ships with a special 60 days trial license enabling the user to try the interactive and client server functions. User can upgrade to the full license before or after this trial period with an upgradable password.

## Recommended System for Flexo Printing

- Workflow system: Express FlexoFlow
- Ripping: Express RIP
- Trapping: Express Trap with i-Tone plug-in
- Imposition: Plate Controller
- Proofing: Star Proof (Advanced flexo dots reproduction)

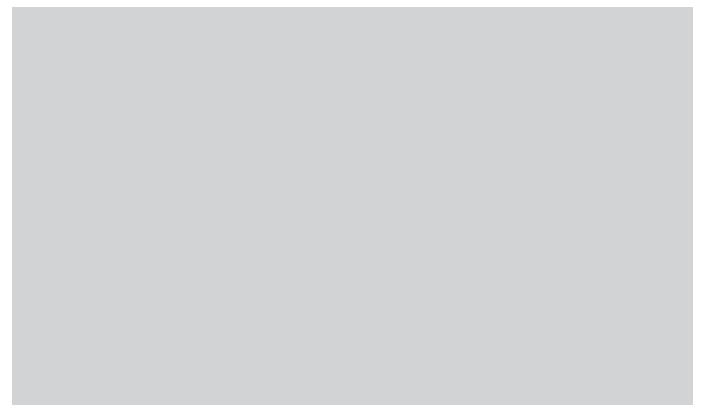
## System Requirements

### Express Trap for PC users

- CPU: Intel Pentium IV 2.8GHz or above
- Memory: 1GB RAM
- Hard disk: 80GB SATA Disk
- Operating System: Windows NT 4.0 or Windows 2000 / XP
- RIP Software: 5.3 Revision 4 or higher (Version 5.5 and higher is needed to work with pre-separated jobs)

### Express Trap for MAC users

- CPU: Dual G5 2GHz or above
- Memory: 1GB RAM
- Hard disk: 80GB SATA Disk
- Operating System: OSX 10.3 or above
- RIP Software: 5.3 Revision 4 or higher (Version 5.5 and higher)



Copyright © 2008 Compose. All rights reserved.  
 Compose logo is the trademark of Compose System Limited and its subsidiaries.  
 All other brands and product names are trademarks or registered trademarks of their respective owners.  
 All specifications and price changes are subject to change without notice.  
 Compose cannot accept liability for any loss or damage arising from the use of information or particulars in this document.