

GapFinder, now in version 2 release, is an unique and easy-to-use application specifically developed to provide significant production benefits to the traditional narrow web printers. GapFinder is a proven product that was previously only available exclusively through our OEM partner, it intelligently aligns print jobs against the printing cylinder, it re-arranges job images on the plate so as to optimise and eliminate the press cylinder gaps. The powerful features of GapFinder reduce production errors, lower media wastage and press downtime.



## Production Family

Press Optimization Application  
for Web Presses

### GapFinder

#### Highlights

- Extends the printable area of web presses
- Automatic gap shift optimisation
- Unique 2-Plates Lock Up features
- Saves setup time and production costs
- Reduces errors going through to press
- Intuitive GUI and WYSIWYG features
- Extensive pre-defined marks support
- Automatic colour matching of registration marks
- Re-arranges colour order
- Enables sales department to response quickly to job enquiry and quotation
- Post-RIP Technology provides data integrity

#### Overview

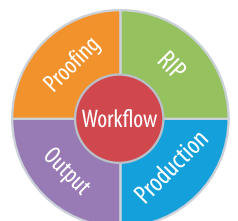
GapFinder is an automated, labour and costs saving production tool for web presses. It analyses and re-arranges jobs by repositioning or splitting job images to achieve optimal print results; by extending the printing height of web presses, GapFinder not only enable longer job to be produced, it also reduces media wastage by shortening or eliminating gaps between printed images.

Uniquely GapFinder can split job images over two printing press towers. It can add registration marks, scan marks, and plate identification as required. GapFinder enables press operator to check input jobs to make sure they can be printed on selected web presses; sales staff can quickly check that a job can be printed, its costs and the sales quotation can be determined accordingly.

**compose**

An Open Future

[www.compose.com.hk](http://www.compose.com.hk) [www.compose.co.uk](http://www.compose.co.uk) [www.composeusa.com](http://www.composeusa.com)



# Features and Benefits

## Automatic Gap Shift

GapFinder analyses and automatically shifts job images up or down to align the image gap with the cylinder gap, and thereby eliminating press cylinder gaps during printing.

## Intelligent Gap Optimisation

GapFinder automatically analyses each colour separation and rearrange job images using the most suitable optimisation for each separation to eliminate press cylinder gaps. For example, an Image Up action may be applied to the cyan plate, while Job Split action is applied to the magenta plate to give the optimal print results.

## Automatic Job Split

GapFinder automatically arranges print jobs over 2 simultaneous press units using the unique 2-Plates Lock Up features. GapFinder will find the best point to split a job image using a colour schema which will re-combine into the job image perfectly when each colour is printed over 2 towers of the printing press.

## Comprehensive Mark Support

GapFinder supports final imaging with pre-defined registration marks, scan marks, and plate identification. The marks are linked to the gap function and are applied and re-arranged accordingly.

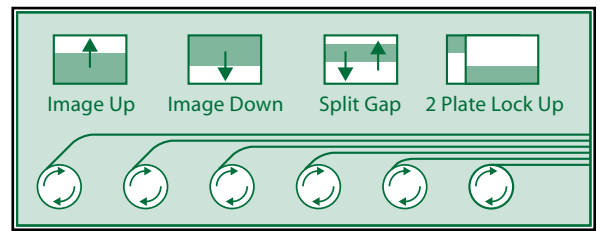
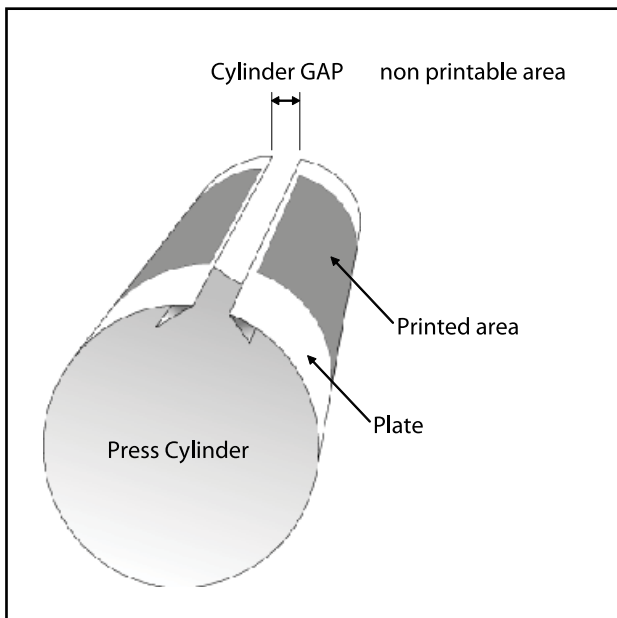
## Powerful Queue Processing

Users can create and define job queues for different GapFinder settings and web presses. Jobs are simply placed into the hot folder queues and they will be processed according to the GapFinder settings defined for each queue.

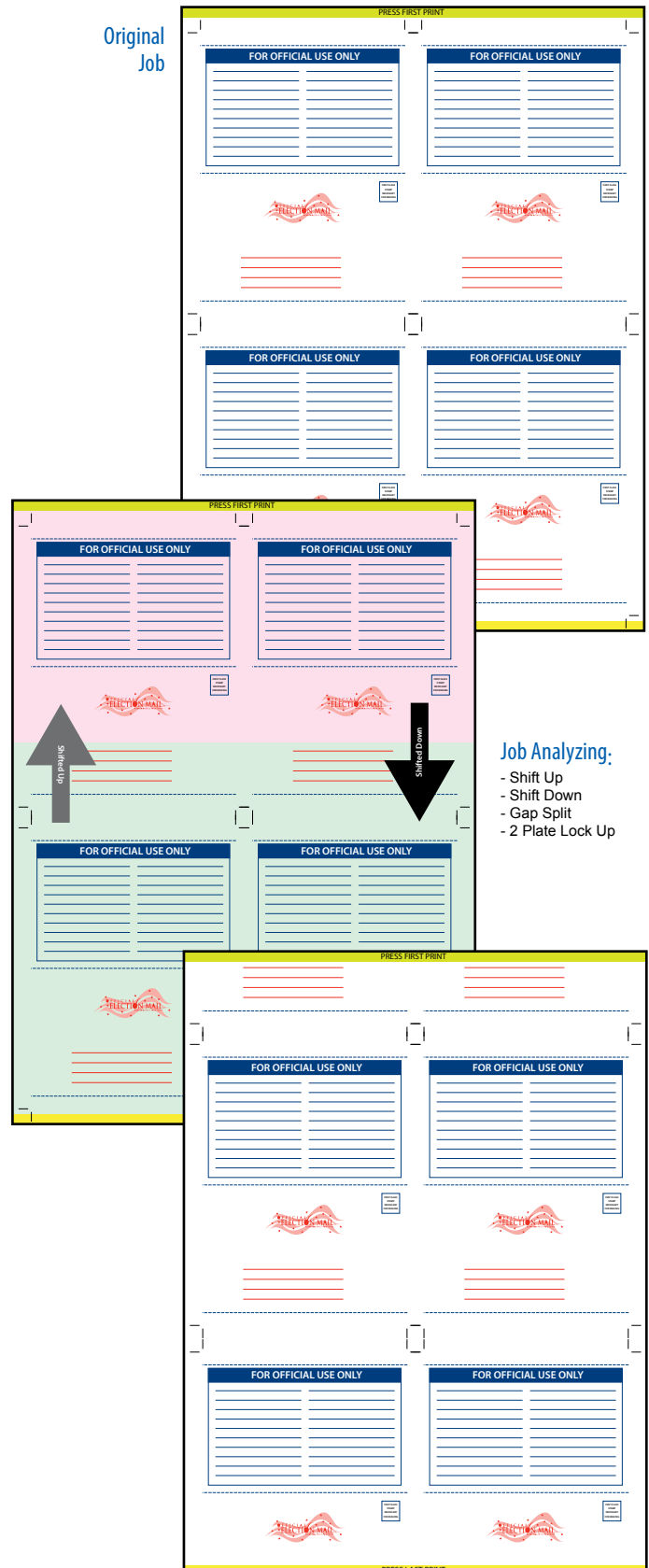
## Exceptional Handling

Most jobs will be handled through the standard GapFinder job queues but any exception can be handled and GapFinder setting can be stored within a job with only a few mouse clicks.

GapFinder offers rotary forms printers an automated tool to address specific press plate cylinder gap demands



Original Job

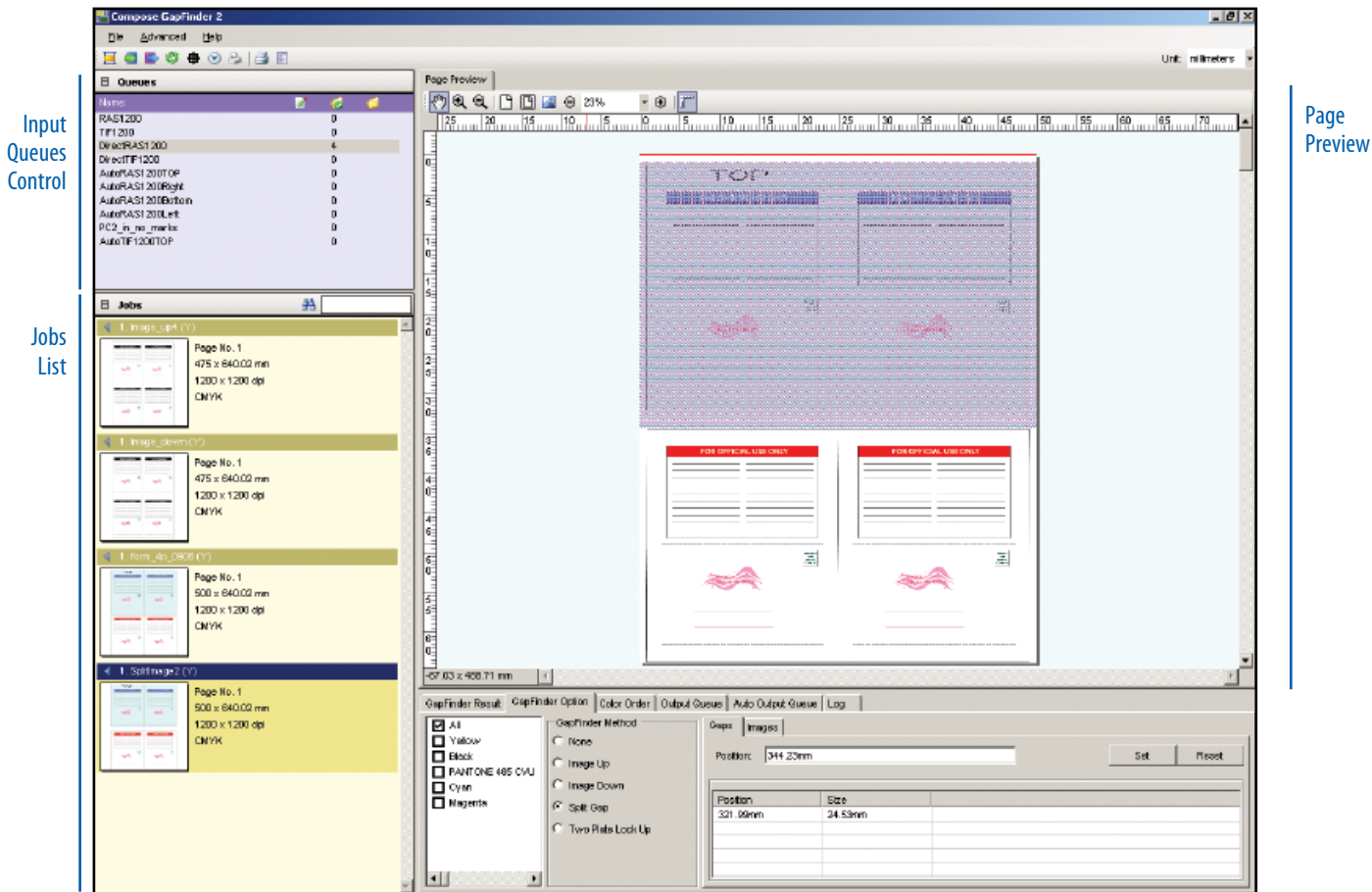


**Job Analyzing:**  
 - Shift Up  
 - Shift Down  
 - Gap Split  
 - 2 Plate Lock Up

## Gap Optimized

GapFinder analyzes each job's gap requirements, automatically shift or split the job image to assure press compatibility without any operator intervention.

GapFinder provides a WYSIWYG graphical user interface for user to see various action and parameters that GapFinder applied in each separation color.



GapFinder Result, Option, Color Order, Output Queue, Auto Output Queue, and Log Control

### Easy-to-use Job Management

A thumbnail is rendered for each input job for easy reference. Users can quickly locate jobs by scrolling through the job list or by keying in partial job name.

### Interactive and WYSIWYG User Interface

Users can view instantaneously the results of each GapFinder's action type and parameter settings. Users can also preview jobs and see the actual image gap as the GapFinder actions are applied.

### Integration into Workflows

GapFinder works seamlessly with our Express WorkFlow or Express FlexoFlow systems. It can also operate in tandem to most popular workflow systems in the market or work as a standalone application.

### Post-RIP Technology providing Data Integrity

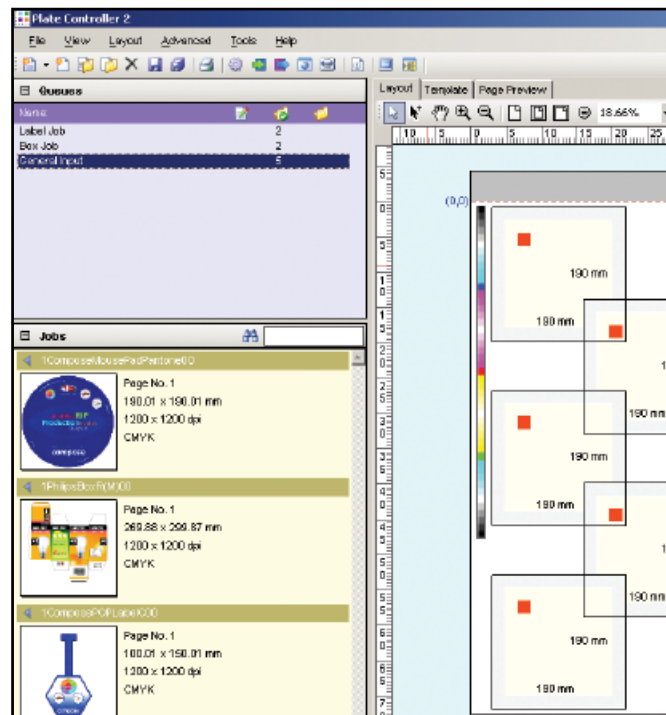
GapFinder applies Post-RIP technology, accepts 1-bit TIFF, Compose Netflow Raster, and Harlequin PageBuffer files from input, and generates 1-bit TIFF to platemaker's TIFF Catcher, or Compose Netflow Raster for the Compose Raster PrintStation.

### PlateController for Manual Job Placement (Optional)

GapFinder is compatible with Compose's PlateController application, an optional powerful flatworking module, for job placement using standard templates or manually. The PlateController enables users to control all aspect of a job placement, including placement of job pages, left-and-right gutters, front-and-back margins and step-and-repeat for any special job handling.

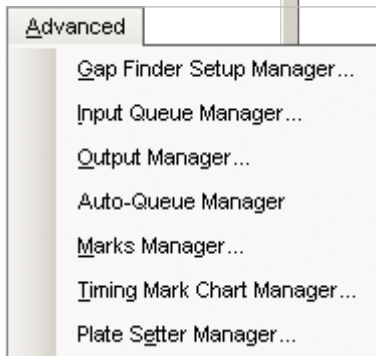
### Visual Proof for Softproofing Results & Plates (Optional)

Visual Proof is an optional complementary softproofing tools for accurate online checking of image position, marking and colour plate separation prior to print run.

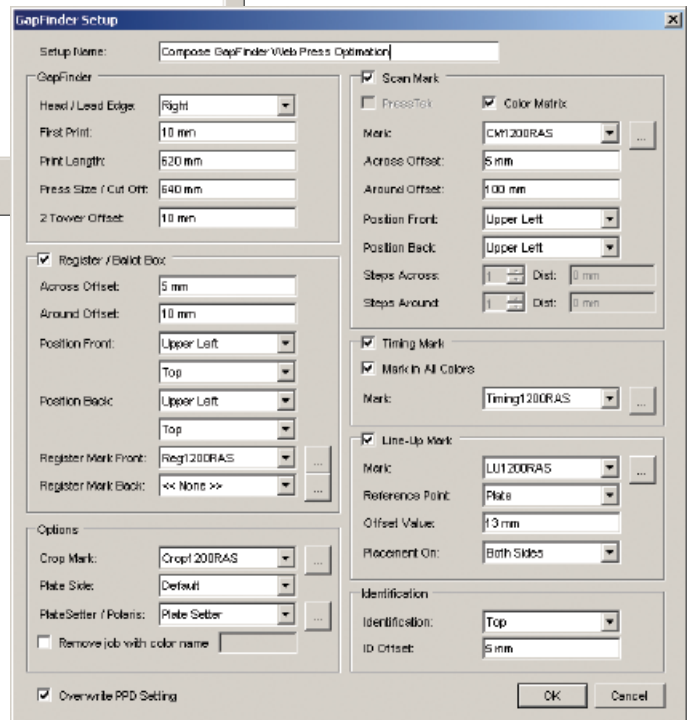


Optional Plate Controller provides for precious job placement

Name	Head/Lead Edge	First Print	Print Length
Top_20080305_Gap	Top	10 mm	620 mm
Right	Right	10 mm	620 mm
Bottom	Bottom	10 mm	620 mm
Left	Left	10 mm	620 mm
10_620_640_8_test	Top	10 mm	620 mm
no_mark	Top	10 mm	620 mm
Compose GapFinder With Press Optimization	Right	10 mm	620 mm



Advanced setup options in GapFinder



Comprehensive setup in GapFinder for every pre-defined parameters and values in register, marks, identification and gap settings.

## Updates in Version 2

- Graphical user interface for viewing and previewing jobs and the calculated shifts or gaps before generating the output file
- User can change gapfinder settings and view the changes in real time
- Now supports color matrix marks.
- Users can now change the order of the color separation, which changes the placement of the color matrix mark.
- A new Page Size Manager enables user to easily choose the split in 2 Plate Lock Up cases.
- Version 2 is now multi-threaded to take advantage of multi-core computers, resulting in much faster output generation.
- Full support for Plate Controller 2 layout file.

## Specification

### File Input Formats

- any 1-bit Tiff created by RIPs
- Harlequin PageBuffer
- Compose NetFlow Raster

### File Output Formats

- 1-bit Tiff
- Compose NetFlow Raster

### Printing on web

- Forms and direct mail
- Labels and tickets
- Packaging
- Security printing

## System Requirements

### Recommended:

CPU:	Dual Xeon 2.8GHz
Memory:	2GB RAM
Hard Drive:	80GB Hard Disk
OS:	Windows 2000 Professional or Server Windows 2003 Server

