

# pressSIGN

## Pressroom Family

Accurate color on press

pressSIGN



ISO 12647-2, ISO 12647-3, GRACoL G7, SWOP

### Intelligent Printing

pressSIGN tests and controls the printing process to give consistently accurate color and provides analysis of press performance.

Using pressSIGN dramatically reduces make-ready times and increases print quality. Matching international printing standards such as ISO 12647 is easy.

There are 4 version of pressSIGN, **pressSIGN standard**, **pressSIGN-Pro**, **pressSIGN-Trends**, **pressSIGN-PrintBuyer**. See the pressSIGN compatibility chart on next page and choose the version that suits your needs.

Every pressSIGN reading is written to a database allowing quick and immediate access to all past jobs. Jobs can be selected by any combination of criteria such as press, operator, date, time, run length, make ready time, print standard and client. Comments can be added to any job and searched for on the database making it easy to see the impact of any changes made on the press such as new consumables or settings.

### Highlight

- Easy to adjust each ink key density to achieve the lowest Delta E
- Create and adjust plate curves
- Pantone® Libraries for 5 or 6 color printing
- Compensation for the color shift as ink dries (dry back)
- Detailed pdf report for measurements or production report
- All International Printing Standards built-in
- Reduces make-ready times
- Works with the X-rite Eye-One
- Easy to get the right settings

**compose**

An Open Future

[www.compose.com.hk](http://www.compose.com.hk) [www.compose.co.uk](http://www.compose.co.uk) [www.composeusa.com](http://www.composeusa.com)



# pressSIGN-Pro & pressSIGN-Trends

pressSIGN-Pro measures and controls the printing process for up to 6 color printing to ensure accurate color on press. pressSIGN-Pro features complete set of analysis tools to help improve press and operator performance identifying issues of wastage and quality.

pressSIGN-Pro and pressSIGN-Trends allow you to import multiple jobs and analyze all aspects of the production process. For example, all today's jobs from one press can be imported and analyzed by overall score, dot gain, gray balance, primary score, overprint, trapping and make ready times. pressSIGN-Pro and pressSIGN-Trends help users to understand how their presses are performing, and how to improve print quality. With pressSIGN-Trends, watch the performance of the press from the office as each reading appears in the database. pressSIGN really does mean intelligent printing.

Set up jobs in pressSIGN-Trends with job details including company name, client, press target, run length and allocate the job to press and operator.

Operator opens pressSIGN-Pro and sees only his jobs. He opens the next job and everything is prepared including any required instructions. The pressSIGN-Pro operator can see the overview and how to adjust each ink key across the press.

The pressSIGN-Trends administrator can view all jobs printed, compare presses, operators or shift performance, see jobs currently on press and update plate adjustment curves.

## Adjust density correctly

pressSIGN's unique algorithms create the correct density setting for each color based on the actual paper, ink and press. House densities can be a rough guide, but pressSIGN's predictions are based on real time information produced from the press.

The easy-to-read graphical interface shows how to adjust the ink density for each primary color making it easy to see what density settings to apply. pressSIGN-Pro provides this information for each ink key, while the standard edition of pressSIGN gives you an average setting for the sheet. In addition you can quickly see the range of densities in target and the closest measured density.

This means that hitting the right color is quick, easy and objective.

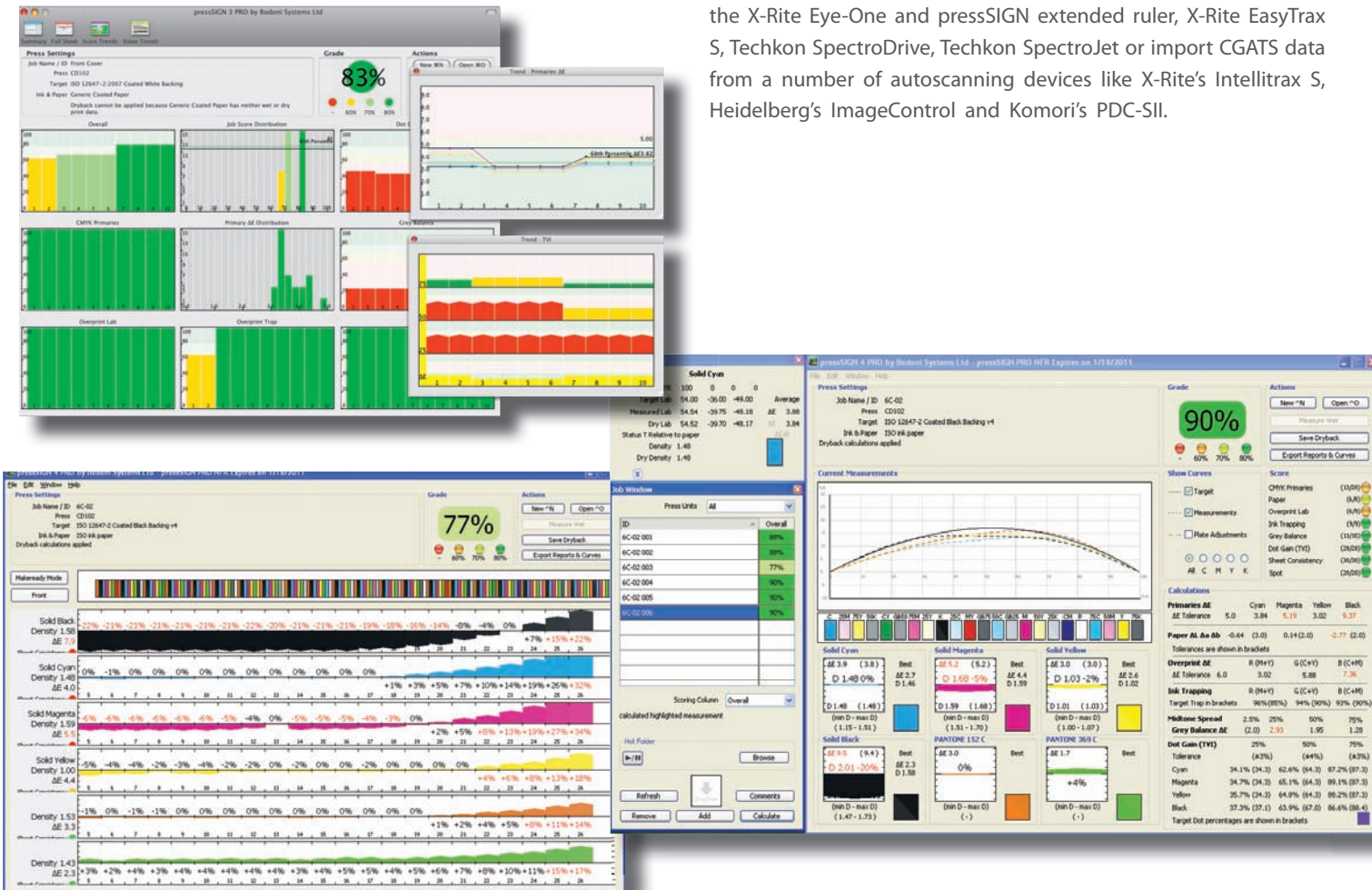
## Plate adjustment curves

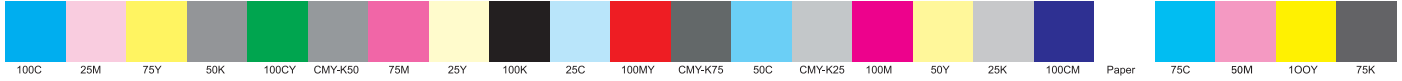
If the dot gain curve does not meet the standard then pressSIGN provides the correct plate adjustment curve. Export the adjustment curve directly into the most popular platesetter and filmsetter RIPs.

## Consistency score

pressSIGN-Pro provides a consistency score for the colors across the sheet. Reading the full width of the press sheet provides more accurate data for assessment of quality and also for updating plate curves.

Reads the full width of the press sheet with pressSIGN-Pro using the X-Rite Eye-One and pressSIGN extended ruler, X-Rite EasyTrax S, Techkon SpectroDrive, Techkon SpectroJet or import CGATS data from a number of autoscanning devices like X-Rite's Intellitrax S, Heidelberg's ImageControl and Komori's PDC-SII.





## pressSIGN control strip

## pressSIGN scoring system

Meeting the standard on every press sheet can be difficult. pressSIGN provides a 'traffic light' scoring system making it easy to identify press sheets that reach your standard.

Once your own scoring system is set up you can export this file and send it to other users.

CMYK Primaries (14/20)  
 Paper Colour (5/5)  
 Overprint ΔE N/A  
 Ink Trapping (12/12)  
 Grey Balance (15/15)  
 Dot Gain (TVI) (28/28)

# 93%

Job : ISO Test Print  
 Press : Heidelberg  
 Printed by : Compose System Ltd

ISO Sheefed Gloss Black Backing Scored  
 Thursday, 15 March 2007 16:59  
 pressSIGN by Compose Systems Ltd

### pressSIGN Certification Production Report

Job name : 20101213-001  
 Printed by : Compose  
 Press : Shimidzu  
 Ink & paper : Generic Coated Paper/Wet press sheet, NO dryback applic  
 Device : X-Rite Eye One(123456)  
 Dates / Times : Thursday, November 11, 2010 : 2:31 PM  
 Job Duration : 3h 54m  
 Measurements : 24 Measurements  
 Press Standard : Compose G7 Varnish - 1

Score: **80%**

CMYK Primaries (19/20)  
 Paper (9/9)  
 Overprint Lab (9/9)  
 Overprint Trap (9/9)  
 Grey Balance (9/15)  
 Dot Gain (TVI) (17/28)  
 Sheet Consistency (17/20)  
 Spot Colour (7/7)  
 Gamut Volume (13289/13289) 100.15%

Lab Values & Density - Lab values measured D50, 2 Observer, Density measured Status T relative to paper

Colour	Measured Lab	Target Lab	ΔE (Tolerance Δe76/lab)	Print Contrast	CMYK Density (Estimated)
Cyan	54.76 -35.03 -49.40	55.00 -37.00 -50.00	2.75 (5.00)	41%	1.34 (1.55)
Magenta	46.99 73.75 -4.50	48.00 74.00 -3.00	2.41 (5.00)	39%	1.34 (1.50)
Yellow	87.94 -6.54 92.42	89.00 -5.00 93.00	3.36 (5.00)	29%	0.97 (1.11)
Black	14.50 0.60 1.87	15.00 0.00 0.00	2.16 (5.00)	49%	1.65 (1.81)
PANTONE 100 C	89.52 0.63 54.73	89.52 0.63 54.73	1.56 (3.00 ΔE2000)		
PANTONE 300 C	38.43 -10.05 -63.61	38.43 -10.05 -63.61	2.26 (3.00 ΔE2000)		

Red(M-Y) Overprint 46.14 68.01 47.43 47.00 68.00 49.00  
 Green(C-Y) Overprint 48.13 47.90 31.02 50.00 48.00 25.00  
 Blue(C-M) Overprint 22.50 22.19 -46.15 24.00 17.00 -46.00  
 Paper 92.24 -6.54 -3.26 92.86 1.04 -1.87  
 25% Grey Balance 73.46 0.37 -0.56 75.00 0.00 -1.54  
 50% Grey Balance 57.69 0.29 1.40 58.05 0.71 -1.27  
 75% Grey Balance 37.79 -0.09 2.85 40.06 0.52 -0.93  
 Dot Gain (TVI) Curves

Cyan: 39.7% (34.3%), 66.8% (64.0%), 86.1% (87.3%)  
 Magenta: 39.9% (34.3%), 68.0% (64.0%), 87.5% (87.3%)  
 Yellow: 40.5% (34.3%), 68.4% (64.0%), 88.2% (87.3%)  
 Black: 41.5% (37.1%), 69.6% (67.0%), 88.1% (88.4%)

Report generated by pressSIGN v4.1.1 by Bodoni Systems Ltd - www.bodoni.co.uk (©2007-2010)

Job Score Distribution

Primary ΔE Distribution

Grey Balance ΔE

Overprint Trap

Magenta TVI

Black TVI

Print Trap Value

## pressSIGN label

Attach the pressSIGN Pass label to the OK sheet to show your customers that their printed sheets pass the standard.

## pressSIGN pdf report

The pressSIGN pdf report provides all the information you need about the color performance of the press.

Density, Lab values, dot-gain curves, and scoring are included in the pdf. Keep this report in the job bag for client inspections and for reprints.

Measurements	Date / Time	Overall	CMYK Primaries	TVI	Grey Balance	Overprint Lab	Overprint Trap	Paper	Sheet Consistency	Spot
1	G7-AY-y0001 01	10/11/2010 2:31 PM	80%	11926	11195	87%	89%	88%	100%	88%
2	G7-AY-y0001 02	10/11/2010 2:31 PM	81%	11925	11928	88%	89%	88%	100%	88%
3	G7-AY-y0001 03	10/11/2010 2:31 PM	80%	11926	11925	87%	89%	88%	100%	88%
4	G7-AY-y0001 04	10/11/2010 2:31 PM	80%	11925	11926	87%	89%	88%	100%	88%
5	G7-AY-y0001 05	10/11/2010 2:31 PM	78%	11925	11926	87%	89%	88%	100%	88%
6	G7-AY-y0001 06	10/11/2010 2:31 PM	80%	11925	11926	87%	89%	88%	100%	88%
7	G7-AY-y0001 07	10/11/2010 2:31 PM	77%	11925	11926	87%	89%	88%	100%	88%
8	G7-AY-y0001 08	10/11/2010 2:31 PM	77%	11925	11926	87%	89%	88%	100%	88%
9	G7-AY-y0001 09	10/11/2010 2:31 PM	78%	11925	11926	87%	89%	88%	100%	88%
10	G7-AY-y0001 10	10/11/2010 2:31 PM	71%	11925	11926	87%	89%	88%	100%	88%
11	G7-AY-y0001 11	10/11/2010 2:31 PM	80%	11925	11926	87%	89%	88%	100%	88%
12	G7-AY-y0001 12	10/11/2010 2:31 PM	80%	11925	11926	87%	89%	88%	100%	88%
13	G7-AY-y0001 13	10/11/2010 2:31 PM	77%	11925	11926	87%	89%	88%	100%	88%
14	G7-AY-y0001 14	10/11/2010 2:31 PM	80%	11925	11926	87%	89%	88%	100%	88%
15	G7-AY-y0001 15	10/11/2010 2:31 PM	79%	11925	11926	87%	89%	88%	100%	88%
16	G7-AY-y0001 16	10/11/2010 2:31 PM	80%	11925	11926	87%	89%	88%	100%	88%
17	G7-AY-y0001 17	10/11/2010 2:31 PM	80%	11925	11926	87%	89%	88%	100%	88%
18	G7-AY-y0001 18	10/11/2010 2:31 PM	80%	11925	11926	87%	89%	88%	100%	88%
19	G7-AY-y0001 19	10/11/2010 2:31 PM	80%	11925	11926	87%	89%	88%	100%	88%
20	G7-AY-y0001 20	10/11/2010 2:31 PM	80%	11925	11926	87%	89%	88%	100%	88%
21	G7-AY-y0001 21	10/11/2010 2:31 PM	80%	11925	11926	87%	89%	88%	100%	88%
22	G7-AY-y0001 22	10/11/2010 2:31 PM	80%	11925	11926	87%	89%	88%	100%	88%
23	G7-AY-y0001 23	10/11/2010 2:31 PM	80%	11925	11926	87%	89%	88%	100%	88%
24	G7-AY-y0001 24	10/11/2010 2:31 PM	80%	11925	11926	87%	89%	88%	100%	88%

## Printing Standards

Print to international or user defined standards pressSIGN is the most effective tool for matching any printing standard.

Select any international standard:

- ISO 12647-2 Sheet-fed or web offset
- ISO 12647-3 Newsprint
- ISO 12647-4 Gravure
- ISO 12647-6 Flexographic
- GRACoL G7 Sheet-fed or Web (SWOP)

Create a new standard from an imported CMYK ICC profile. Measure the press paper color and adjust the target based on the actual paper in use. Export the new ICC profile for use in proofing systems and design applications for a complete color matched system.

Use a measured press sheet to create a standard. This is ideal for print re-runs or capturing a press pass. Export the press standard to other users so that they can match your work.

Select the appropriate dot gain curve for CMY and separately for the black, then choose the type of backing on which you are

reading the press sheet. Finally, choose the default tolerances or set your own.

Once the standard has been selected then determine what you consider to be an acceptable pass for your press sheets. pressSIGN allows you to export the set up so other users can work to exactly the same settings.

## pressSIGN control strip

pressSIGN will automatically generate the control strip depending on the selected print standard and according to press and ink key widths.

## Read the press sheet wet and dry

pressSIGN adjusts for the color shift that takes place as the inks dry.

Predicting how the color appears when dry means you are giving the client exactly what is expected according to a verified proof.

# pressSIGN Compatibility Chart

functions	Standard	Pro	Trends	Print-Buyer
<b>standards</b> <ul style="list-style-type: none"> <li>ISO 12647-2, ISO 12647-3 ISO 12647-4, ISO 12647-6</li> <li>GRACoL G7</li> <li>import ICC profile / previous measurement user defined</li> </ul>	✓	✓	✓	✓
<b>diagnostics</b> <ul style="list-style-type: none"> <li>density adjustments</li> <li>plate curve adjustments</li> </ul>	✓	✓	✓	
<b>input data</b> <ul style="list-style-type: none"> <li>via X-Rite eye-one</li> <li>CGATS data via Intellitrac S, Komori PDCS, Heidelberg image control &amp; others</li> <li>X-Rite EasyTrax S, TechkonSpec- trojet, Techkon Spectrodrive</li> </ul>	✓	✓		✓
<b>measurement functions</b> <ul style="list-style-type: none"> <li>density</li> <li>dot area</li> <li>CIEL*a*b*/deltaE</li> </ul>	✓	✓		✓
<b>import/export</b> <ul style="list-style-type: none"> <li>standards/measurements/dry back data/ICC profiles/color bar</li> </ul>	✓	✓	✓	✓
<b>reports</b> <ul style="list-style-type: none"> <li>label</li> <li>pdf measurement report without curve info</li> <li>pdf measurement report with curve info</li> <li>pdf production report</li> </ul>	✓	✓	✓	✓
<b>auto input</b> <ul style="list-style-type: none"> <li>scans for CGATS data to auto input into pressSIGN</li> </ul>	✓	✓	✓	✓
<b>views</b> <ul style="list-style-type: none"> <li>summary view without density adjustment information</li> <li>summary view with density adjustment information</li> <li>full sheet view</li> <li>score trends view</li> <li>value trends view</li> </ul>	✓	✓	✓	✓
<b>production / make ready mode</b>		✓		
<b>spot color</b> <ul style="list-style-type: none"> <li>PANTONE® licence</li> </ul>	✓	✓	✓	✓
<b>upload reports</b> <ul style="list-style-type: none"> <li>online or by email</li> </ul>	✓	✓	✓	✓

## PANTONE®

Version 4 of pressSIGN provides the most accurate printing of 5 and 6 color jobs.

Working with spot colors is easy. Simply select from the PANTONE® libraries included, measure a swatch or type in a L\*a\*b\* value. pressSIGN predicts the correct density adjustments to produce the best possible match to the target.

Select the PANTONE® color(s) required and measure the control strip. pressSIGN shows how to adjust the ink keys on all four, five or six colors.



### pressSIGN PANTONE® licensed

pressSIGN can generate a PDF report showing how close the press was run to the standard, export tint data in several different formats as detailed below and print a simple pass /fail label.

## System Requirements

### Mac

Mac OS 10.5 or later  
2 GB RAM  
2 USB Ports (for Eye One & label printer)  
Color Monitor: 1280 x 1024  
X-Rite Eye-One

### PC

Windows XP Pro, Win 7 Pro  
2 GB RAM  
2 USB Ports (for Eye One & label printer)  
Color Monitor: 1280 x 1024  
X-Rite Eye-One



Copyright © 2011 Compose. All rights reserved.  
Compose logo is the trademark of Compose System Limited and its subsidiaries.  
All other brands and product names are trademarks or registered trademarks of their respective owners.  
All specifications and price changes are subject to change without notice.  
Compose cannot accept liability for any loss or damage arising from the use of information or particulars in this document.